



MIPOLAM PLANET

gerflor.com



Gerflor[®]
theflooringroup

MIPOLAM PLANET



Recycled content 25%

100% Recyclable

Contenu recyclé : 25%
100% recyclable



Bio content 17%

(Mipolam BioPlanet - on demand)

Contenu bio-sourcé 17%
(Mipolam BioPlanet - sur commande)



Anti-viral activity & Anti-bacterial activity
Indoor air quality: TVOC 100 times below standard

Activité anti-bactérienne et anti-virale
Qualité de l'Air : TCOV 100 fois inférieur à la norme.

WE CARE | WE ACT.

Our Commitments for a Sustainable future



Bright and subtle non directional design

Décor non directionnel, lumineux et subtil



Heavy traffic resistance

Résistance au trafic intense



Ease of maintenance thanks to Evercare™

Facilité d'entretien grâce à Evercare™



1 product, 3 solutions (R10/EL7/EL5)

1 produit, 3 solutions (R10/EL7/EL5)



Roll 2 x 20ml - Tiles 608x608mm on demand

Rouleaux 2 x 20 ml - Dalles 608x608mm sur demande



An exclusive and Gerflor patented surface treatment.
Traitement de surface exclusif breveté Gerflor.



Stain shield
Bouclier anti-taches



No wax for life
Water and detergent savings
Pas de métallisation nécessaire
Économie d'eau et de détergent



Matt effect: enhanced design
Effet mat : pour sublimer le décor



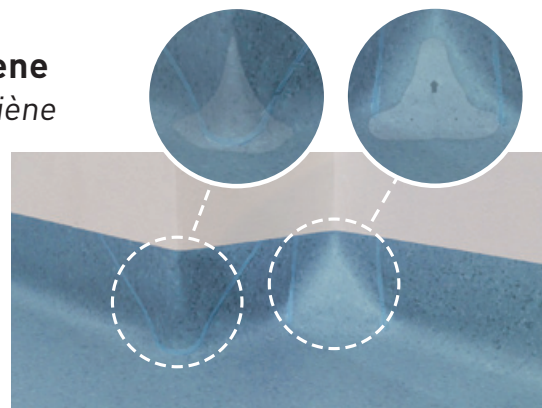
Anti-bacterial & anti-viral activity
Activité anti-bactérienne et anti-virale
 ISO 22196 & ISO 21702

CLEAN CORNER SYSTEM

An innovative corner system serving hygiene
Un système d'angle innovant, au service de l'hygiène



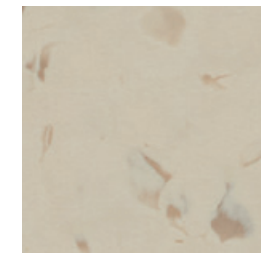
SUITABLE FOR ALL GERFLOR VINYL FLOORS
 Clean Corner System enables to treat corners to meet all healthcare & industry requirements.



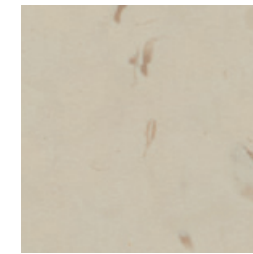
ADAPTÉ AUX SOLS PVC GERFLOR
 Le Clean Corner System permet de traiter les angles pour répondre aux exigences des secteurs de la santé et de l'industrie.

MIPOLAM PLANET

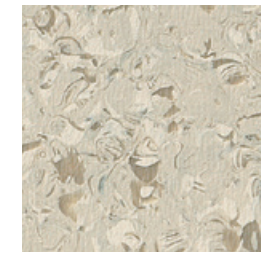
5 FLOORING SOLUTIONS
5 solutions pour toutes les applications



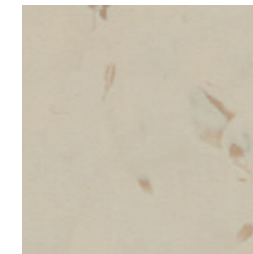
MIPOLAM PLANET R10
40 designs
on demand / sur commande**



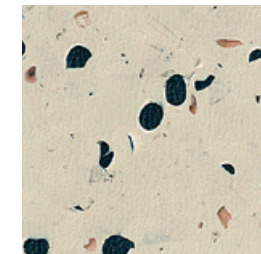
MIPOLAM PLANET
40 designs
on stock / en stock
on demand / sur commande**



MIPOLAM EL7
Dissipative / Dissipateur
10 designs
on stock / en stock
on demand / sur commande**



MIPOLAM BIOPLANET
Bio content / Contenu bio-sourcé
40 designs
on demand / sur commande**



MIPOLAM EL5
Conductive / Conducteur
6 designs
on stock / en stock

**MOQ 500sqm / 500m² minimum*

More than a floor... Floor, wall & Finishes
Plus qu'un sol... Solutions complètes, sols, murs & finitions



- 1** 2m width roll
Rouleau 2 m de large
- 2** Hot welding
Cordon de soudure
- 3** Coving
Remontée en plinthe
- 4** Flexible wall covering or rigid wall protection
Mural souple et protection murale rigide
- 5** Handrails
Mains courantes
- 6** Entry mat
Tapis d'entrée

Images & pictures have been reproduced as faithfully as printing technology permits / Images & photos non contractuelles

MIPOLAM PLANET



Compact
2m



Heavy
traffic

Evercare™



Matt effect



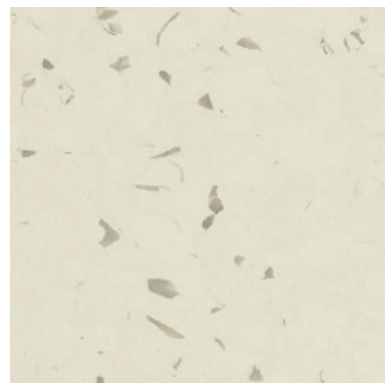
5432 Sun Stone
NCS: 1030-Y20R / LRV: 57.7 EL7



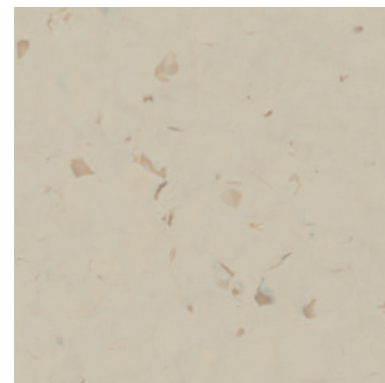
5403 Moon Dust
NCS: 1002-Y50R / LRV: 72.2 EL7



5422 Sunflower
NCS: 2050-Y10R / LRV: 46.5



5402 Ivory Dust
NCS: 1005-Y30R / LRV: 68.2



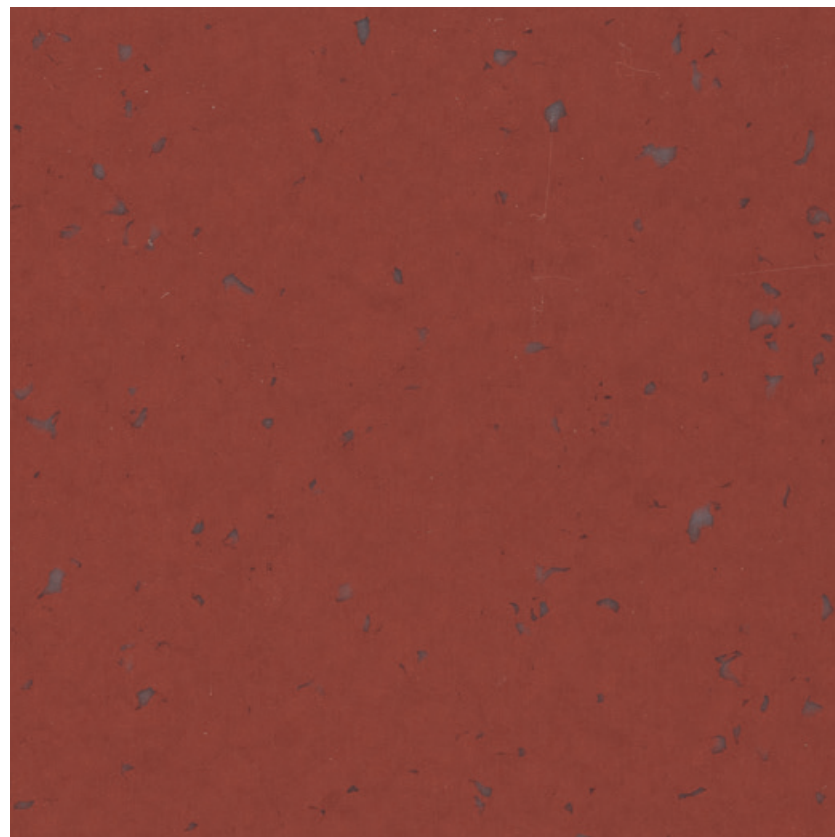
5424 Hawk Eye
NCS: 2005-Y40R / LRV: 54 EL7



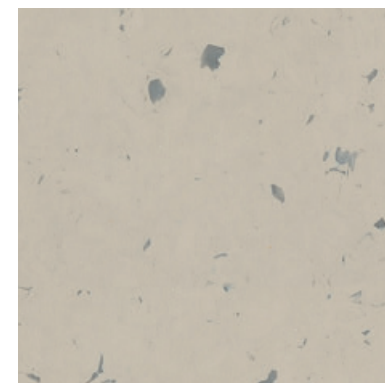
5404 Vanilla Sky
NCS: 2005-Y30R / LRV: 53 EL5



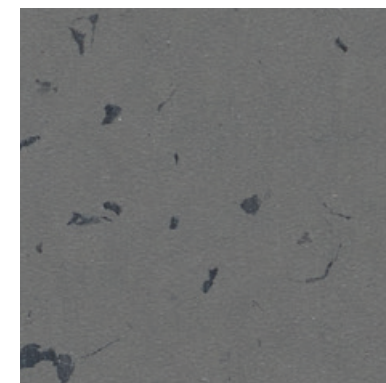
5455 Lava Flow
NCS: 3050-Y70R / LRV: 17.5



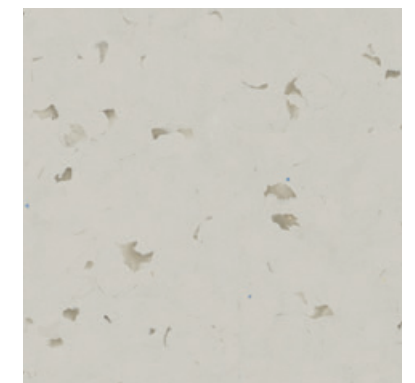
5475 Intense Ruby
NCS: 5030-Y80R / LRV: 9.8



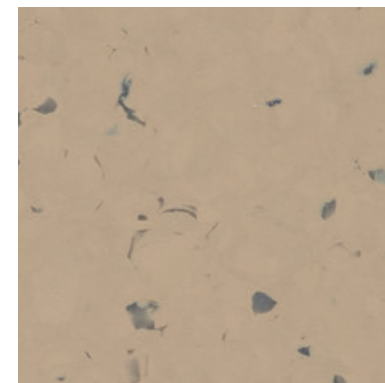
5441 Clay Soil
NCS: 3005-Y50R / LRV: 42.2



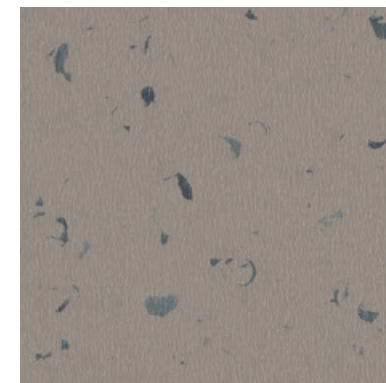
5444 Rocky Hill
NCS: 6000-N / LRV: 16.1



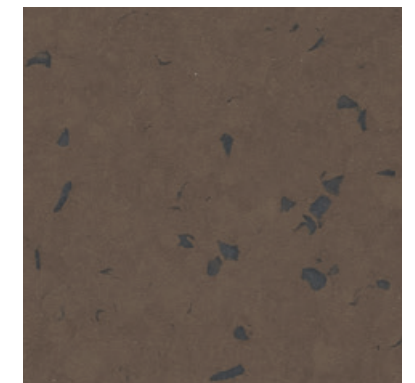
5412 Moon Stone
NCS: 2002-Y50R / LRV: 52.3 EL7



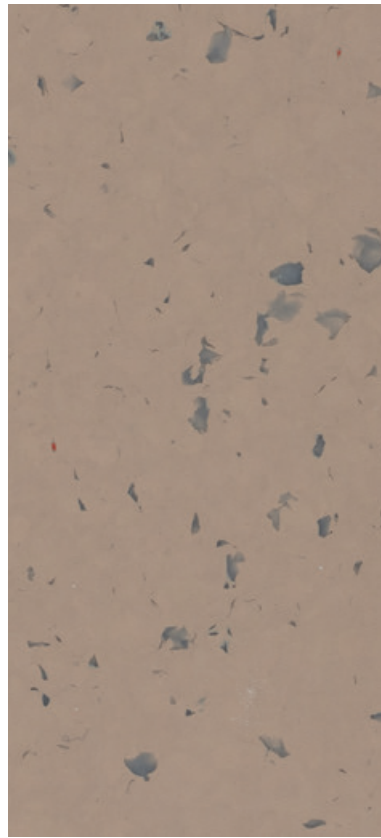
5428 Shedded Ground
NCS: 3010-Y40R / LRV: 35.4



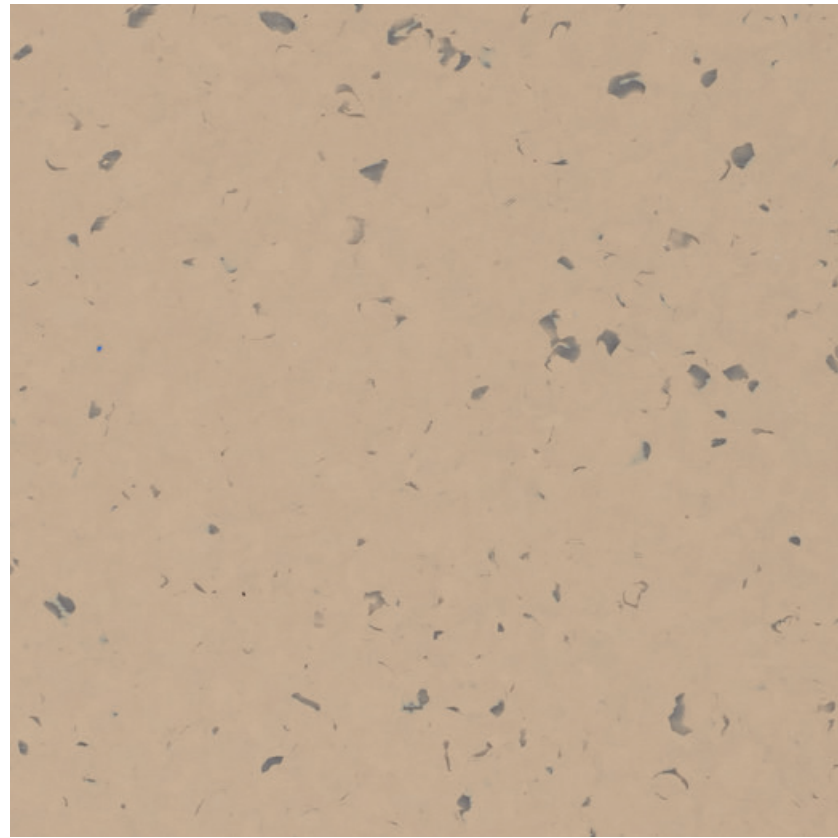
5443 Wood Path
NCS: 5005-Y50R / LRV: 25.2



5445 Tree Bark
NCS: 6010-Y50R / LRV: 11.5 EL7



5438 Andalusite
NCS: 4010-Y50R / LRV: 29.4



5418 Terra Nera
NCS: 3010-Y40R / LRV: 38.2



EL7

Colour also available as
Couleur aussi disponible en
MIPOLAM EL7

EL5

Colour also available as
Couleur aussi disponible en
MIPOLAM EL5

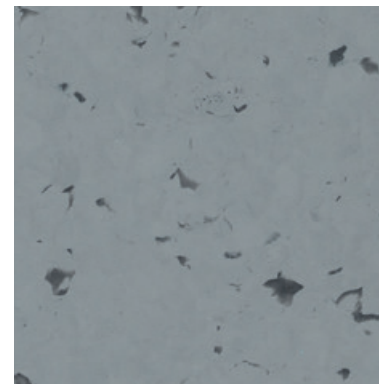


INTERIOR
DESIGNER

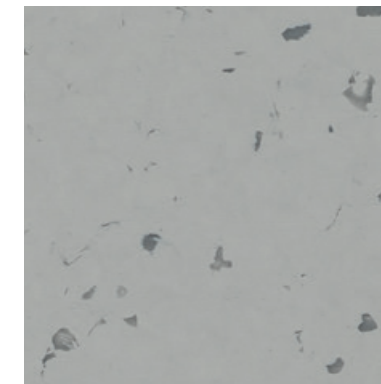


interiordesigner.gerflor.com

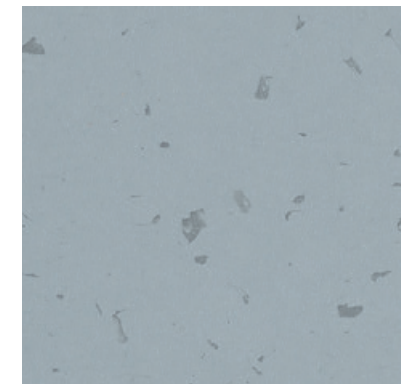
SAMPLE
ÉCHANTILLONS



5430 Sideral Grey
NCS: 4502-B / LRV: 27.2

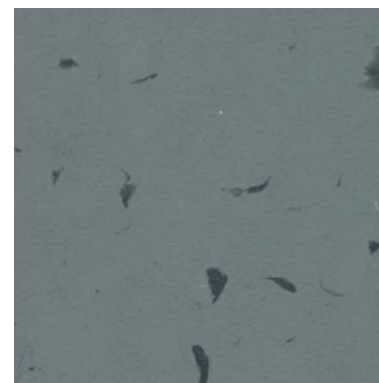


5439 Moon Way
NCS: 3502-R / LRV: 37

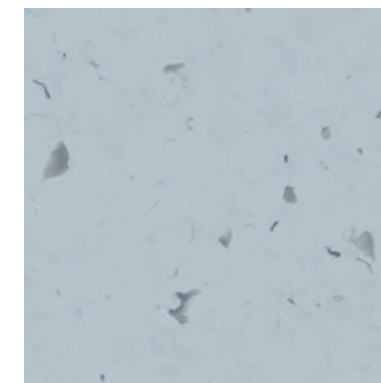


5420 Stone Powder
NCS: 3010-R70B / LRV: 36.4

EL7

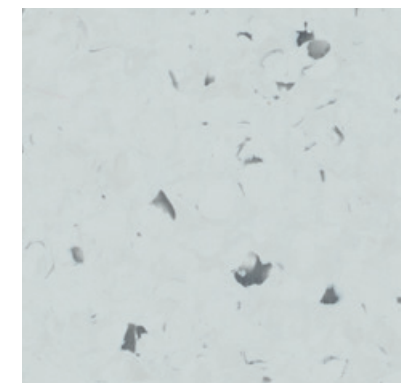


5450 Blended Ashes
NCS: 5502-B / LRV: 20.1



5413 Rain Fall
NCS: 2010-R70B / LRV: 49.5

EL7



5410 Silix
NCS: 1502-B / LRV: 60.9

EL5

LRV: Light Reflectance Value

Toutes les références sont disponibles en rouleaux "compact" ◆ Dalles "compact" (608x608 mm) disponibles pour un minimum de commande de 500 m²

MIPOLAM PLANET



Compact
2m

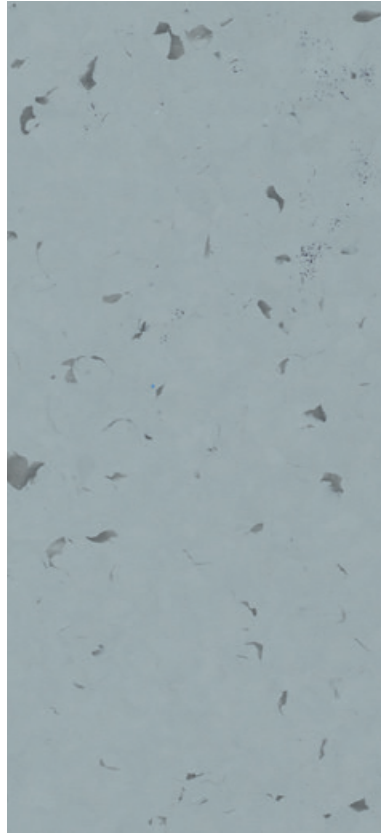


Heavy
traffic

Evercare™

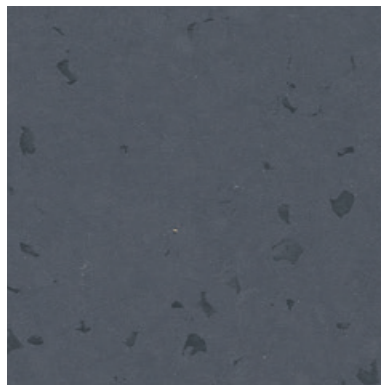


Matt effect



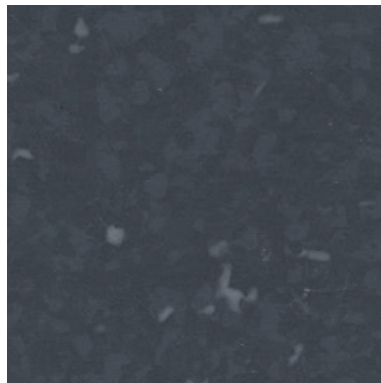
5429 Fog Patch
NCS: 3005-R80B / LRV: 35.9

EL5



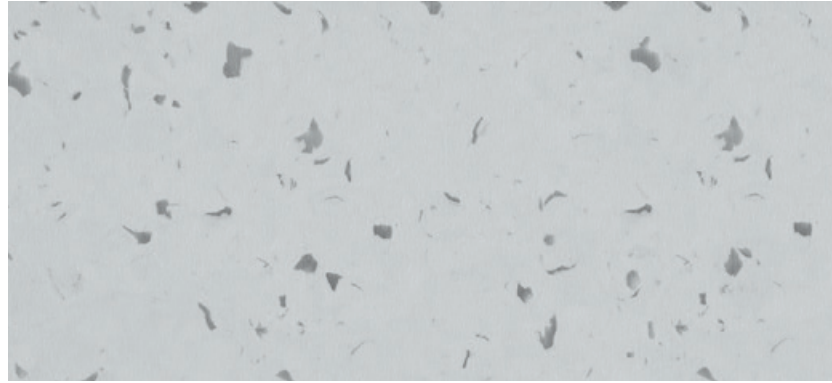
5459 Stormy Cloud
NCS: 7005-R50B / LRV: 10.4

EL7

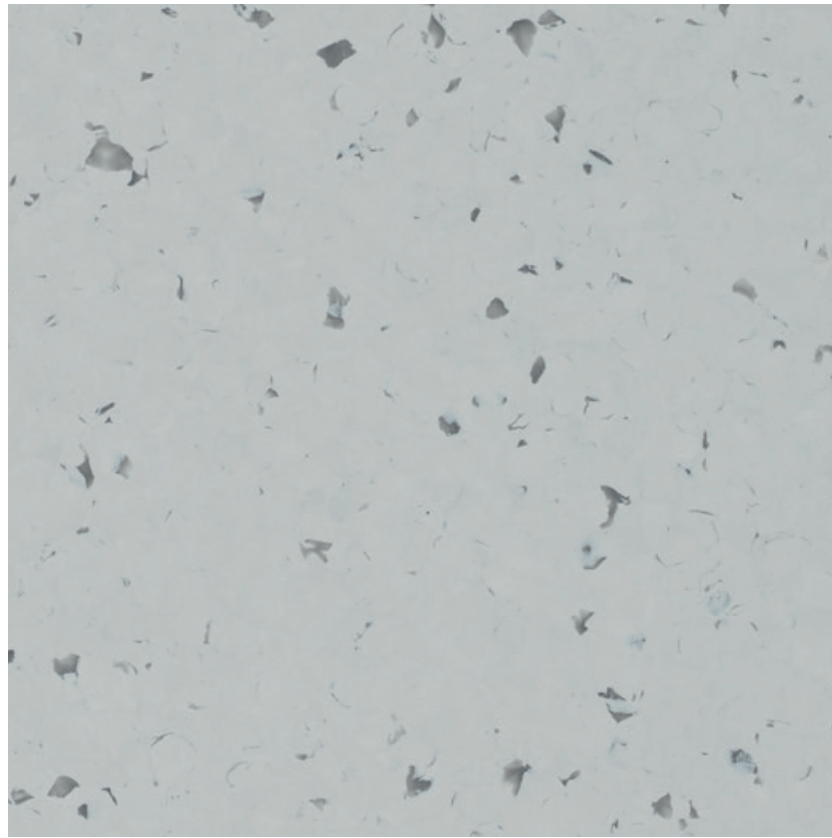


5460 Lava Stone
NCS: 7502-B / LRV: 6.5

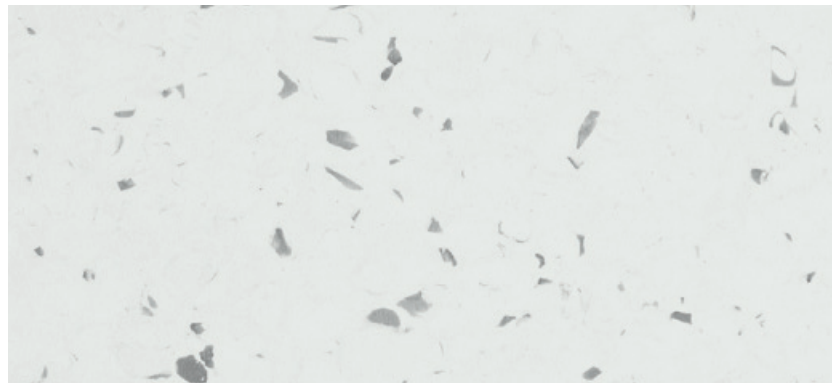
EL5



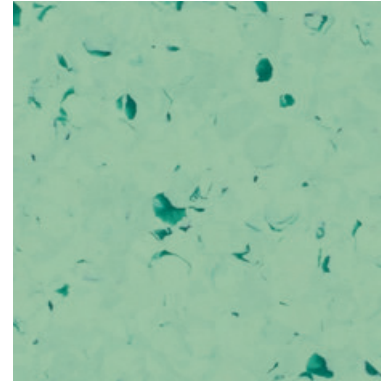
5409 Pebble Beach
NCS: 2002-R50B / LRV: 53.4



5411 Atlantic Grey
NCS: 2500-N / LRV: 49.1

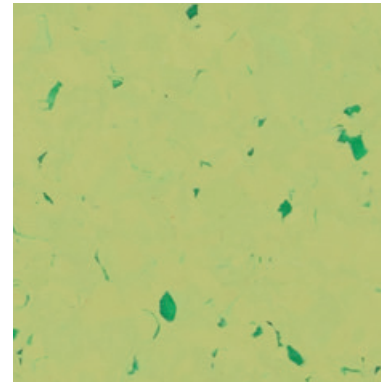


5408 Chalk Dust
NCS: 1500-N / LRV: 65.8

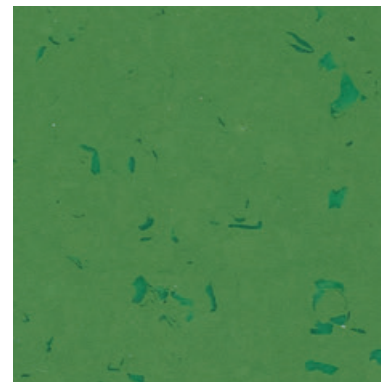


5417 Foggy Hill
NCS: 2020-G20Y / LRV: 39.4

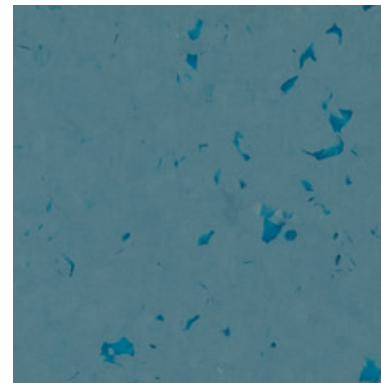
EL5



5427 Green Zest
NCS: 2030-G80Y / LRV: 45.3

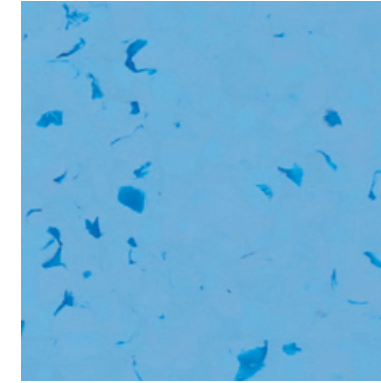


5447 Aventurine
NCS: 4040-G30Y / LRV: 17.1



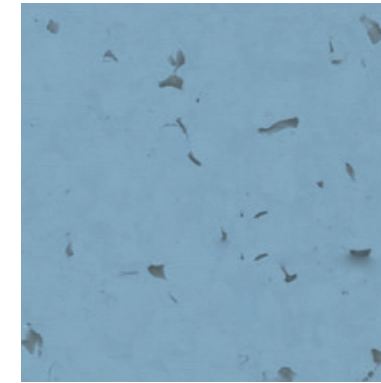
5466 Rocky Blue
NCS: 5020-B10G / LRV: 16.9

EL7



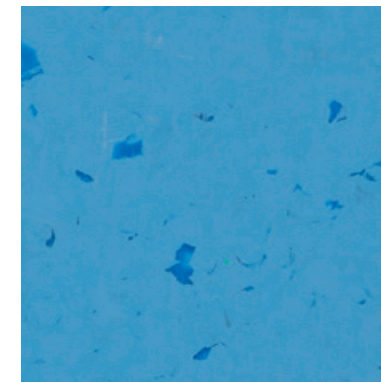
5426 Shadow
NCS: 2040-R90B / LRV: 35.5

EL5

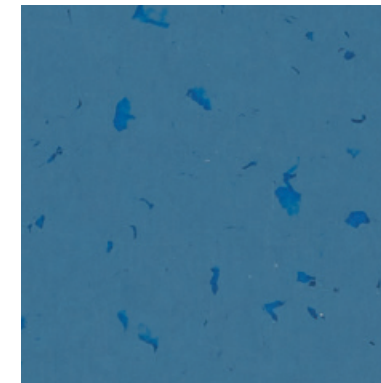


5416 Acquamarina
NCS: 3020-R90B / LRV: 33.2

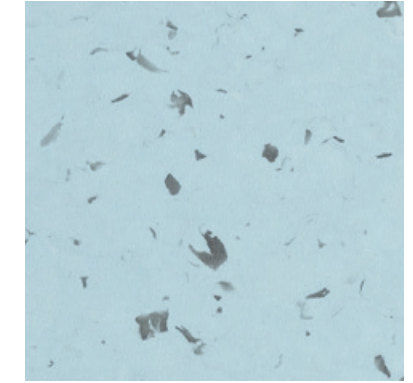
EL7



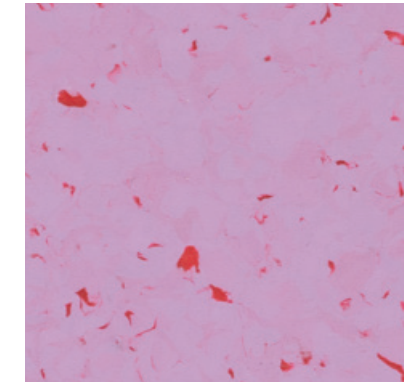
5436 Tiger Eye
NCS: 2050-R90B / LRV: 24.5



5446 Blue Nug
NCS: 5030-R90B / LRV: 13.5



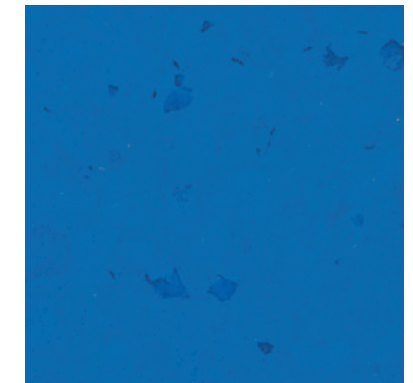
5406 Moqui
NCS: 1515-R90B / LRV: 52.1



5482 Sugar Drip
NCS: 2030-R40B / LRV: 34.8



5437 Reef Water
NCS: 1050-B40G / LRV: 42



5456 Intense Indigo
NCS: 3050-R80B / LRV: 12



* Information sur le niveau d'émission de substances volatiles dans l'air intérieur, présentant un risque de toxicité par inhalation, sur une échelle de classe allant de A+ (très faibles émissions) à C (fortes émissions)




	Mipolam Planet	Mipolam BioPlanet	Mipolam Planet R10	Mipolam EL7	Mipolam EL5
--	----------------	-------------------	--------------------	-------------	-------------

DESCRIPTION

Total thickness / Epaisseur totale	EN ISO 24346	mm	2.00	2.00	2.00	2.00	2.00
Weight / Poids	EN ISO 23997	g/sq.m	2700	2700	2700	3100	2985
Width of sheet / Largeur des lés	EN ISO 24341	cm	200	200	200	200	200
Length of sheet / Longueur des lés	EN ISO 24341	lm	20	20	20	20	20

CLASSIFICATION

Norm/product specification / Norme / Spécification produit	-	-	EN ISO 10581	EN ISO 10581	EN ISO 10581	EN ISO 10581	EN ISO 10581
European classification / Classement européen	EN ISO 10874	class / classe	34-43	34-43	34-43	34-43	34-43
Classement UPEC	-	class / classe	U4P3E2/3C2	Pour pose dans des locaux classés U4P3E2/3C2	-	U4P3E2/3C2	U4P3E2/3C2
Certification  UPEC (evaluation.cstb.fr)	QB 30	n° certif.	332-015.1	Demande en cours n° 21.4022/1	-	332-013-1	301-056-1
Fire rating / Réaction au feu	EN 13 501-1	class	Bfl-s1	Bfl-s1	Bfl-s1	Bfl-s1	Bfl-s1
Electrical resistance / Résistance électrique ⁽¹⁾	EN 1081	Ohm	-	-	-	10 ⁴ ≤ Rt ≤ 10 ⁶	10 ⁴ ≤ Rt ≤ 10 ⁶
Static electrical propensity / Potentiel de charge	EN 1815	kV	< 2	< 2	< 2	< 2	< 2
Slip resistance / Glissance	DIN 51130 / BGR 181	class / classe	R9	R9	R10	R9	R9






PERFORMANCE

Type binder content / Teneur en agent liant	EN ISO 10581	type	I	I	I	II	I
Dimensional stability / Stabilité dimensionnelle	EN ISO 23999	%	sheet < 0.40	sheet < 0.40	sheet < 0.40	sheet < 0.40	sheet < 0.40
Dimensional stability (average measured value) / Stabilité dimensionnelle (valeur moyenne mesurée)	-	%	sheet ≈ 0.10	sheet ≈ 0.10	sheet ≈ 0.10	sheet ≈ 0.10	sheet ≈ 0.10
Impact sound insulation / Isolation acoustique aux bruits de choc	EN ISO 717-2	dB	5	5	5	5	5
Residual indentation (norm) / Poinçonnement statique rémanent (norme)	EN ISO 24343-1	mm	≤ 0.10	≤ 0.10	≤ 0.10	≤ 0.10	≤ 0.10
Residual indentation (average measured value) / Poinçonnement statique rémanent (valeur moyenne mesurée)	-	mm	~ 0.02	~ 0.02	~ 0.02	~ 0.02	~ 0.02
Castor chair test (type H) / Essai de la chaise à roulettes (type H)	ISO 4918	-	OK	OK	OK	OK	OK
Decontamination / Décontamination	ISO 8690	-	Excellent	Excellent	Excellent	Excellent	Excellent
Watertightness / Etanchéité	EN 13553	Annex A	Pass	Pass	Pass	-	-
Thermal conductivity / Conductivité thermique	EN ISO 10456	W/(m.K)	0.25	0.25	0.25	0.25	0.25
Colour fastness / Solidité lumière	EN 20 105 - B02	degree / degré	≥ 7	≥ 7	≥ 7	≥ 6	≥ 6
Surface treatment / Traitement de surface	-	-	Evercare™	Evercare™	Evercare™	Evercare™	Evercare™
Chemical resistance / Résistance aux produits chimiques ⁽²⁾	EN ISO 26987	class / classe	OK	OK	OK	OK	OK
Anti-bacterial activity (E. coli - S. aureus - MRSA) / Activité anti-bactérienne E. coli - S. aureus - MRSA ⁽³⁾	ISO 22196	-	> 99 % inhibits growth / ne favorise pas la prolifération				
Anti-viral activity (human coronavirus 229E) / Activité Anti-virale (Coronavirus humain)	ISO 21702	-	99.7% after 2h / 99,7% après 2h				

ENVIRONMENT / INDOOR AIR QUALITY / ENVIRONNEMENT / QUALITE DE L'AIR

TVOC after 28 days / TCOV après 28 j	ISO 16000-6	microgramms / m ³	< 10	< 10	< 10	< 10	< 10
Certification / Certification	-	-	Floorscore®	Floorscore®	Floorscore®	Floorscore®	Floorscore®

CE MARKING / MARQUAGE CE


	EN 14041	-					
	-	-					

(1) Measured before installation / Mesuré avant installation

(2) Stain resistance results on gerflor.com / Données de Résistance aux taches sur gerflor.fr


(3) The implementation of an effective cleaning method is the best defence against infection / Le respect des protocoles d'entretien des sols est la meilleure garantie contre les infections.

Product descriptions, installation and Maintenance Guidelines, available on Gerflor.com

 Rubber leaves indelible stains on vinyl floorings: do not use mats with rubber backing and replace tubular furniture feet with those made of PVC or polyamide. Place mats of sufficient length at entrances to reduce outside sources of dirt.

IMPORTANT: The information contained in this document is valid from 31/08/2021 and is subject to change at any time without notice. In the context of constantly changing technology, our customers are responsible, prior to any use, for checking with us that this document is the version in force.

Modèles de descriptifs, principes de mise en oeuvre et méthodes d'entretien sur gerflor.fr

 Proscrire tout élément ou partie d'éléments en caoutchouc susceptible d'être en contact direct avec nos revêtements (embouts de chaises, mobiliers...) et utiliser exclusivement des embouts en PVC ou Polyéthylène. Pour les matériaux EVERCARE™, ne jamais effectuer de décapage avec les disques abrasifs (vert, marron ou noir) ou des procédés risquant de détériorer le traitement de surface (abrasifs, solvant...).

IMPORTANT: Les informations contenues dans ce document sont valables à compter du 31/08/2021 et susceptibles d'être modifiées sans préavis. L'évolution de la technique étant permanente, il appartient à notre clientèle, avant toute mise en oeuvre, de vérifier auprès de nos services que le présent document est bien celui en vigueur.

WE CARE | WE ACT. Our Commitments for a Sustainable future

				
CARBON FOOTPRINT*	BIOSOURCED CONTENT***	RECYCLED CONTENT	ADHESIVE FREE**	ANNUAL VOLUME RECYCLED
-20 % kg CO ₂ equivalent/m ² between 2020 and 2025	10 % by 2025	30 % by 2025	35 % by 2025	60 000 t by 2025