

SHOWER SYSTEM

gerflor.com



Gerflor[®]
theflooringgroup

SHOWER SYSTEM

2019



**HYGIENE AND EASIER
MAINTENANCE**



DECORATIVE PRODUCTS



**DURABLE AND WATERPROOF
INSTALLATION**



**SAFETY FOR PATIENTS,
RESIDENTS
AND EMPLOYEES**



ECO-FRIENDLY SOLUTION

PRESENTATION OF THE RANGE _____ P. 4

- ▶ A COMPLETE SOLUTION _____ p. 4
- ▶ BENEFITS OF THE SYSTEM _____ p. 8
- ▶ COLOR RANGE _____ p. 10

TECHNICAL SOLUTION & ACCESSORIES _____ P. 31

- ▶ TECHNICAL INFORMATION ON COLORS _____ p. 31
- ▶ ACCESSORIES _____ p. 32
- ▶ SPECIFIC TOOLS _____ p. 34
- ▶ MAINTENANCE _____ p. 40
- ▶ PRODUCT DESCRIPTION _____ p. 42
- ▶ TECHNICAL DATASHEET _____ p. 44

SERVICES - ENVIRONMENT _____ P. 46

- ▶ AN ECO-FRIENDLY SOLUTION _____ p. 48

WALL COVERING

A COMPLETE SOLUTION



MURAL CALYPSO
7002 Bamboo Lotus



MURAL CALYPSO
7744 Nordic Milk

FLOORINGS



ELEGANCE SD
0322 Jicama



TARASAFE STANDARD
7618 Edelweiss

FOR WET AREAS



MURAL CALYPSO

7740 Fabric Silk

MURAL CALYPSO

7721 Manhattan Mist

MURAL CALYPSO

7003 Prism Ice

MURAL CALYPSO

7008 Fossil Ice

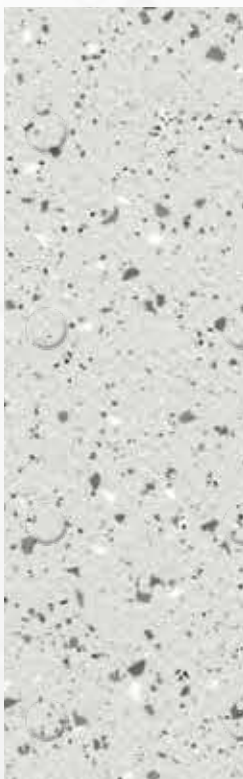
MURAL CALYPSO

7006 Blossom Haze Pearl



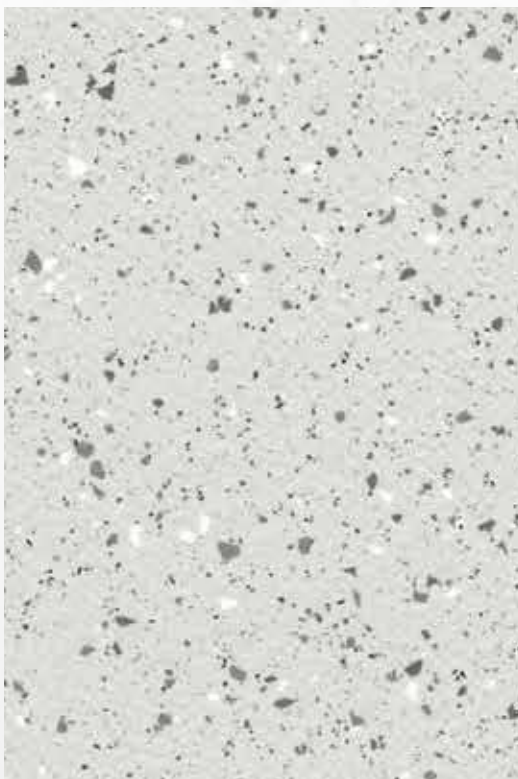
TARASAFE GEO

3771 Rock



TARASAFE ULTRA H2O

7720 Iceberg



TARASAFE ULTRA

8701 Opal

IDEAL FOR ALL APPLICATIONS



STUDENT
ACCOMMODATION



HOSPITAL /
CLINIC



ELDERLY
PEOPLE
HOME



HOTELS



HOUSING



LOCKERS

BENEFITS OF THE SYSTEM



SAFETY FOR PATIENTS, RESIDENTS AND EMPLOYEES

- **Compliance with barefoot and shod slip resistance norms** (DIN 51 097, DIN 51 130 and EN 13845)
- **Compliance with most "access to all" laws** (shower without tray)
- **Compliance with fire norm** EN 13501 and regulations for floorings and wall covering (B-s2,d0)



HYGIENE AND EASIER MAINTENANCE

- Smooth and washable products
- Cove former and Gerflor Corner System for easier maintenance in angles: avoids pools of water forming
- Easy and economical maintenance
- Surface treatment on Tarasafe Ultra/Standard/Geo



DECORATIVE PRODUCTS

- Attractive range of colors which enables more than **1600 combinations** between floors / wall to create calm, warm, Zen or light ambiances!
- Possibility to compose tone on tone surfaces without strong break between two floors especially for Alzheimer units thanks to the 3 colors of threshold
- Colour throughout the thickness for Mural Calypso to ensure a nice aspect of the welding (no white marks)



DURABLE AND WATERPROOF INSTALLATION

- Complete solution with flooring-wall covering-accessories for a **100% waterproof** installation
- Hot welding on floor and wall coverings
- Floorings: 2 types of products > heterogeneous or homogeneous
- Vertical or horizontal installation for Mural Calypso
- Gerflor corner system for durability



ECO-FRIENDLY SOLUTION

- 100% recyclable products
- Products manufactured in Europe in ISO 14001 certified factories
- Up to 50% of mineral or renewable material
- Recycled raw material 100% REACH compliant
- Low VOC emissions

Mural Calypso



7744 Nordic Milk

Mural Calypso



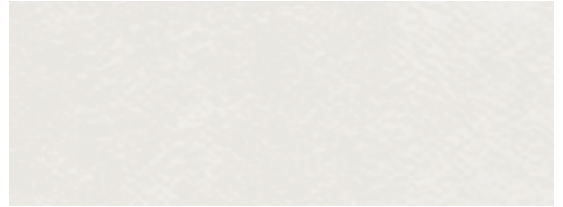
7740 Fabric Silk

Mural Calypso



7714 Frost

Mural Calypso



7711 Ice

Mural Calypso



7715 Crystal



WALL COVERING: MURAL CALYPSO
FLOORING: TARALAY SÉCURITÉ

Elegance SD



0322 Jicama

Tarasafe Standard



7618 Edelweiss

Tarasafe Standard



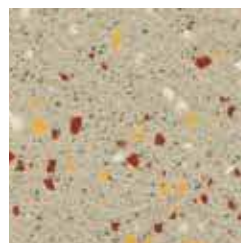
7312 Dune

Tarasafe Geo



3303 Desert

Tarasafe Ultra



7384 Citrine

Tarasafe Geo



8081 Trail

H₂O Tarasafe Ultra H2O - 7314 Sand

Mural Calypso



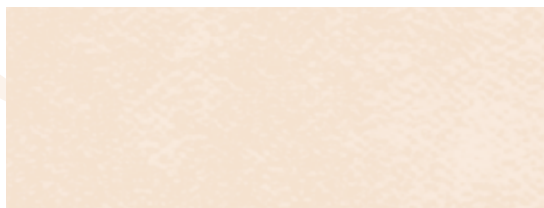
7712 Shadow

Mural Calypso



7002 Bamboo Lotus

Mural Calypso



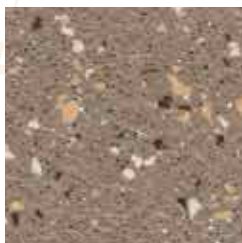
7309 Lotus

Mural Calypso



7311 Linen

Tarasafe Ultra



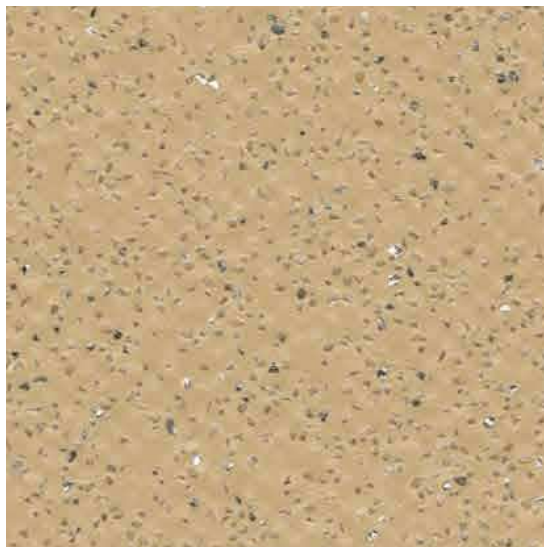
8013 Jasper

Elegance 5D



0329 Hazelnut

Tarasafe Standard



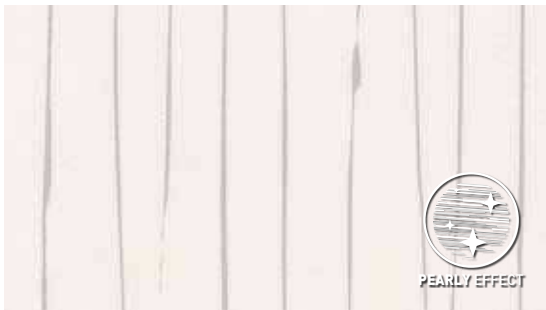
7302 Sahara

Mural Calypso



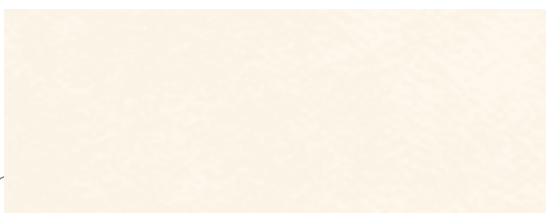
7006 Blossom Haze Pearl

Mural Calypso



7000 Bamboo Snow Pearl

Mural Calypso



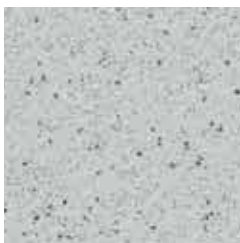
7611 Snow

Mural Calypso



7005 Blossom Snow Pearl

Tarasafe Standard



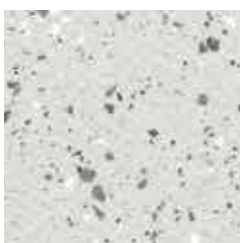
7731 Marbre

Elegance SD



0705 Patisson

Tarasafe Ultra



8701 Opal



Tarasafe Geo



3775 Crystalline



WALL COVERING: BAMBOO SNOW PEARL
FLOORING: ELEGANCE SD JICAMA

Mural Calypso



7736 Fabric Wool

Mural Calypso

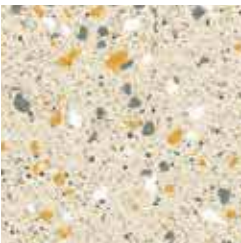


7753 Nordic Zen

WALL COVERING: NORDIC ZEN

Presentation of the range

Tarasafe Ultra



7383 Diopside



Tarasafe Geo



3772 Cliff

Tarasafe Standard



7386 Savana

Mural Calypso



7004 Prism Haze Pearl

Mural Calypso



7003 Prism Ice

Mural Calypso

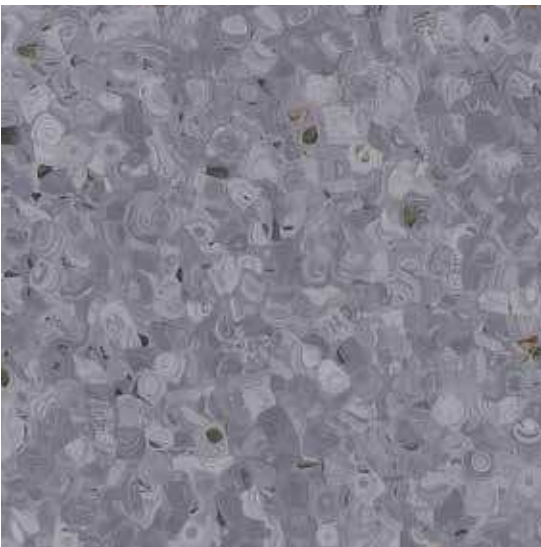


7001 Bamboo Haze Pearl



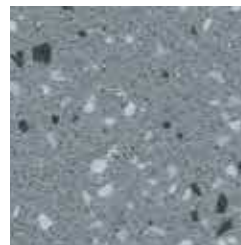
WALL COVERING: PRISM HAZE PEARL

Elegance SD



0704 Raspberry Grey

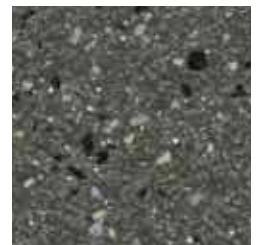
Tarasafe Ultra



8709 Granite



Tarasafe Ultra



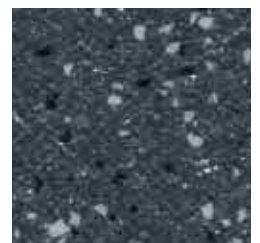
8710 Basalt

Tarasafe Standard



7801 Noir

Tarasafe Ultra



8717 Obsidian

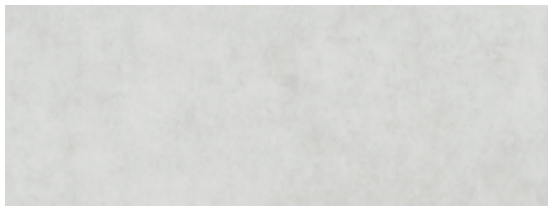


Mural Calypso



7721 Manhattan Mist

Mural Calypso



7010 Haze

Mural Calypso



7728 Manhattan Stone

Mural Calypso



7008 Fossil Ice

Mural Calypso



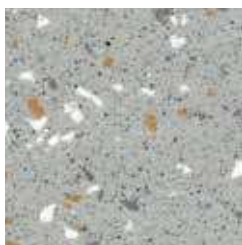
7009 Fossil Haze

Mural Calypso



7734 Manhattan Concrete

Tarasafe Ultra



8704 Pebble

Tarasafe Standard



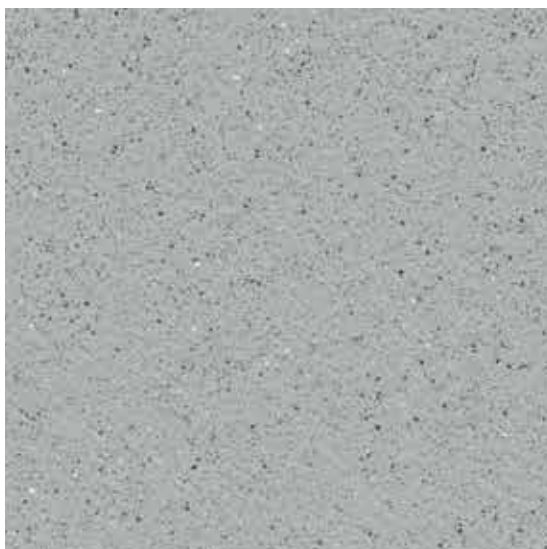
7773 Storm

Tarasafe Geo



3771 Rock

Tarasafe Standard



7767 Dove Grey

Mural Calypso



7007 Blossom Lichen

Mural Calypso



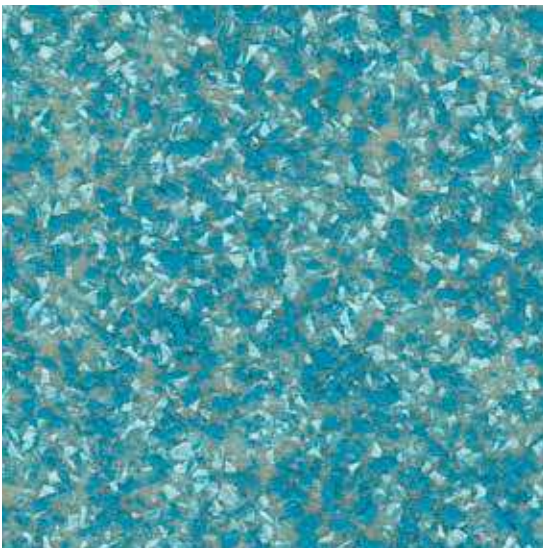
7011 Lichen

Tarasafe Standard



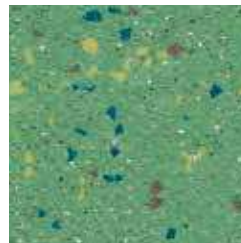
7508 Avocado

Tarasafe Geo



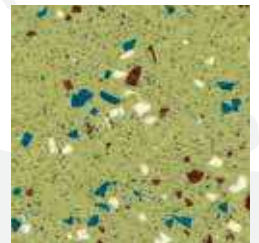
3405 Turquoise

Tarasafe Ultra



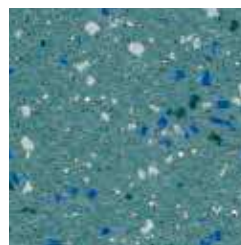
4508 Jade

Tarasafe Ultra



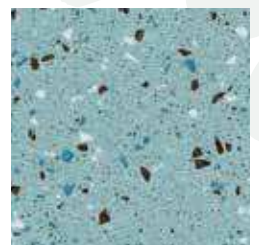
4505 Peridot

Tarasafe Ultra



4460 Topaz

Tarasafe Ultra



4463 Aqua

H₂O Tarasafe Ultra H2O - 7513 Seagrass



FLOORING: MOONSTONE



Mural Calypso

7408 Skyline



Mural Calypso

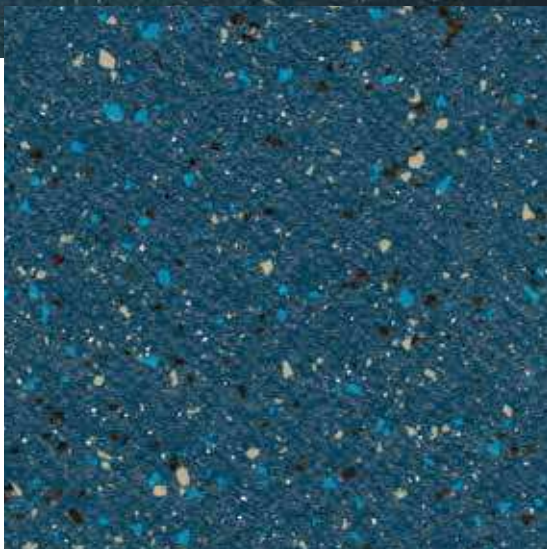
7414 Fabric Denim



Mural Calypso

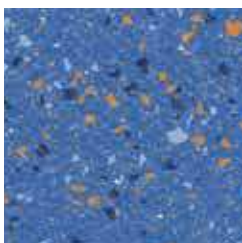
7012 Breeze

Tarasafe Ultra



4472 Moonstone

Tarasafe Ultra



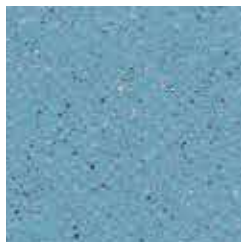
4470 Sapphire

Tarasafe Standard



7709 Royal Blue

Tarasafe Standard



7704 Sky Blue

Tarasafe Standard



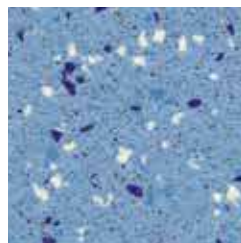
7438 Baleine

Elegance SD



0341 Bilberry

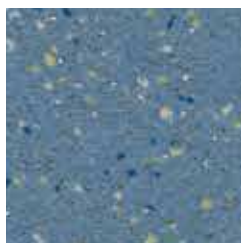
Tarasafe Ultra



7482 Halite



Tarasafe Ultra



4465 Cobalt



Tarasafe Geo



3409 Ocean Wave

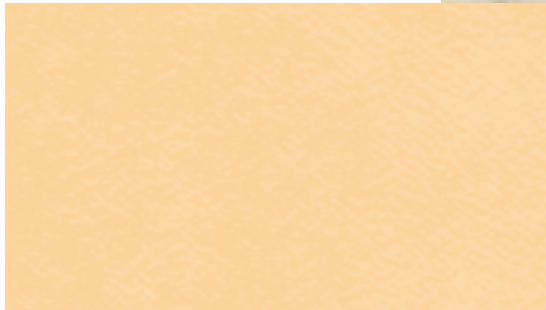
H2O Tarasafe Ultra H2O - 7418 Marine / 7413 Ocean Blue

Mural Calypso



7201 Moonlight

Mural Calypso

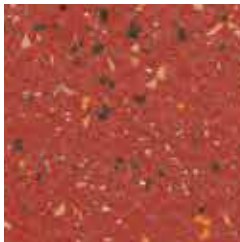


7104 Melon



FLOORING: TARALAY SÉCURITÉ SD ULTRA DIOPSIDE

Tarasafe Ultra



4128 Ruby

Tarasafe Standard



7107 Poppy

Tarasafe Geo



3105 Sunspot

Tarasafe Standard



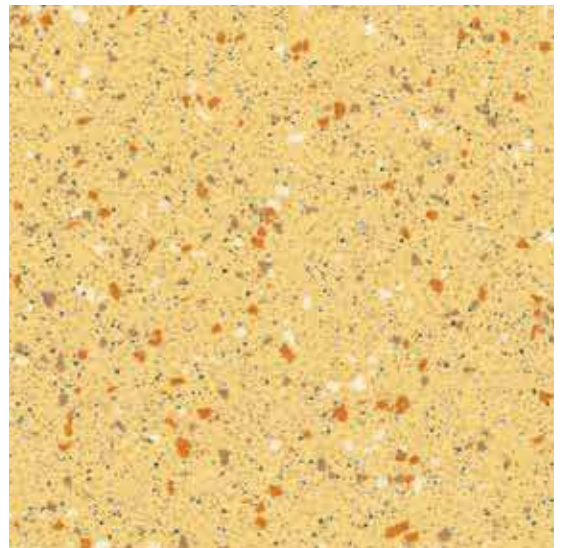
7115 Flame

Elegance SD



0700 Melon

Tarasafe Ultra



4323 Sandstone





WALL COVERING COLOR RANGE

MURAL CALYPSO

Compact | Bs2d0



7744 Nordic Milk



7002 Bamboo Lotus



7753 Nordic Zen



7000 Bamboo Snow Pearl



7734 Manhattan Concrete



7001 Bamboo Haze Pearl



7728 Manhattan Stone



7740 Fabric Silk



7721 Manhattan Mist



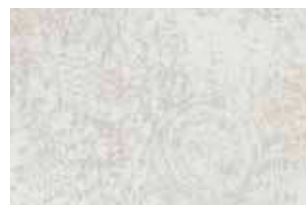
7736 Fabric Wool



7009 Fossil Haze



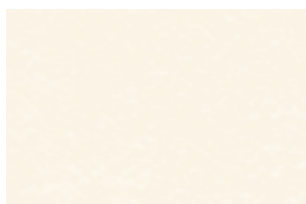
7414 Fabric Denim



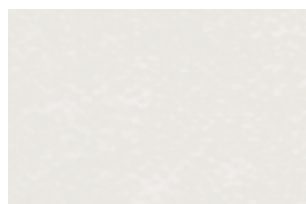
7008 Fossil Ice



7004 Prism Haze Pearl



7611 Snow



7711 Ice



7003 Prism Ice



7104 Melon



7715 Crystal



7005 Blossom Snow Pearl



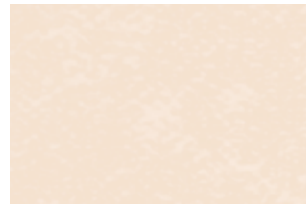
7201 Moonlight



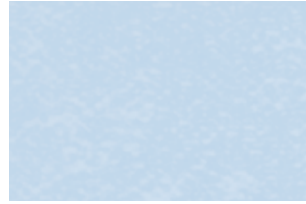
7714 Frost



7006 Blossom Haze Pearl



7309 Lotus



7408 Skyline



7007 Blossom Lichen



7311 Linen



7012 Breeze



7011 Lichen



7712 Shadow



7010 Haze

FLOORING COLOR RANGE

TARASAFE STANDARD



7386 Savana



7618 Edelweiss



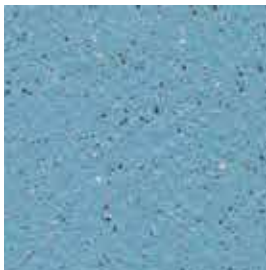
7508 Avocado



7312 Dune



7731 Marbre



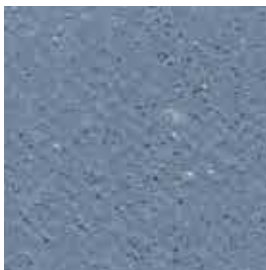
7704 Sky Blue



7302 Sahara



7767 Dove Grey



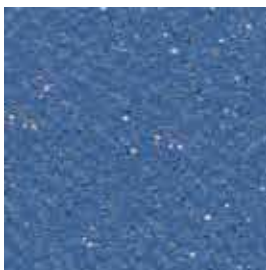
7438 Baleine



7115 Flame



7773 Storm



7709 Royal Blue



7107 Poppy



7801 Noir





TARASAFE GEO

Compact | B | R10 | SparClean®



3775 Crystal



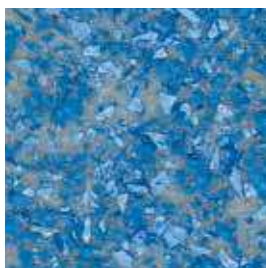
3772 Cliff



3771 Rock



8081 Trail



3409 Ocean Wave



3303 Desert



3405 Turquoise



3105 Sunspot

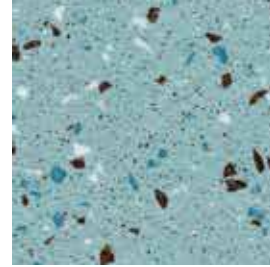




TARASAFE ULTRA

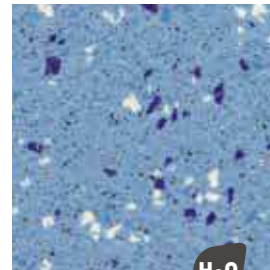
|  |  B |  R10 | SparClean® |

H₂O



4463 Aqua

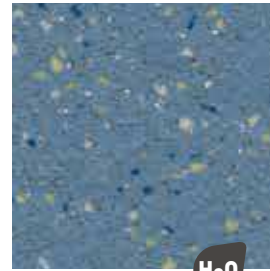
H₂O



7482 Halite

H₂O

H₂O

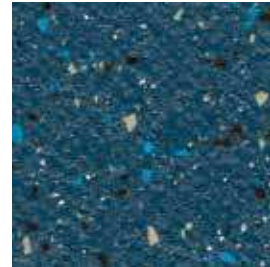


4465 Cobalt

H₂O

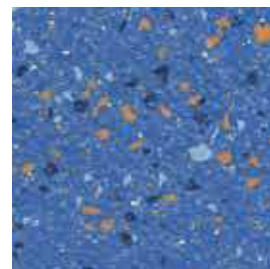
H₂O

H₂O



4472 Moonstone

H₂O



4470 Sapphire

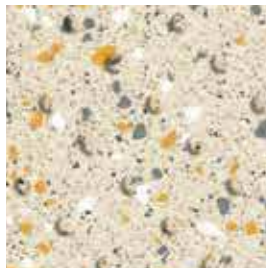
H₂O

Color reference available as Tarasafe Ultra H₂O (R11)

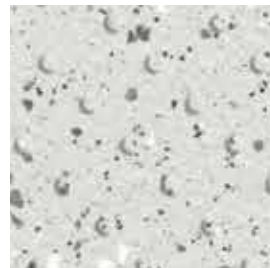


FLOORING COLOR RANGE

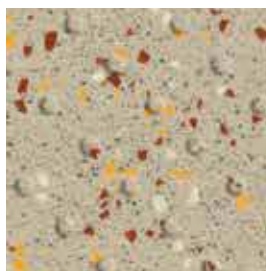
TARASAFE ULTRA H2O



7325 Seashore



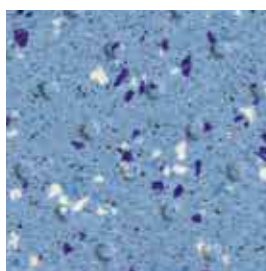
7720 Iceberg



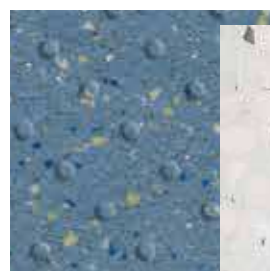
7314 Sand



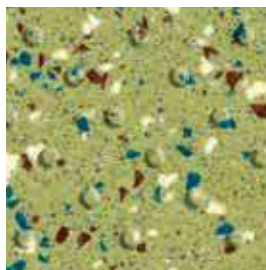
7746 Stone



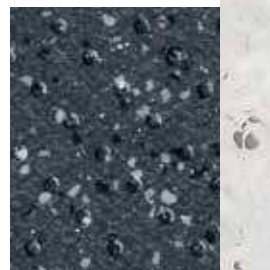
7413 Ocean Blue



7418 Marine



7513 Seagrass



7732 Gravel



ELEGANCE SD



0322 Jicama



0705 Patisson



0329 Hazelnut



0704 Raspberry Grey



0700 Melon



0341 Bilberry



WALL COVERING: HAZE
FLOORING: PATISSON



TECHNICAL INFORMATION ON COLORS

COLORS	LRV Light Reflectance Value (Luminance)	NCS
TARASAFE ULTRA		
8701 Opal	59,1	1500-N
8709 Granite	25,4	5502-B
8717 Obsidian	10,1	7502-B
7383 Diopside	59,6	1005-Y20R
7482 Halite	32,5	2030-R80B
8013 Jasper	23,5	5010-Y50R
4128 Ruby	13,8	3560-Y80R
4323 Sandstone	51,5	1030-Y20R
4505 Peridot	35,5	3030-G70Y
4508 Jade	26,1	3040-G20Y
4460 Topaz	23,0	4020-B30G
8704 Pebble	44,1	3000-N
4463 Aqua	35,1	3010-B30G
4465 Cobalt	23,6	3030-R90B
4427 Moonstone	12,6	6020-R90B
7384 Citrine	40,2	3010-Y20R
8710 Basalt	11,9	7502-Y
4470 Sapphire	17,1	3050-R80B

TARASAFE STANDARD		
7618 Edelweiss	57,9	1505-Y10R
7773 Storm	21,3	5502-B
7801 Noir	5,7	9000-N
7312 Dune	45,8	3010-Y30R
7438 Baleine	21,4	4020-R90B
7508 Avocado	32,8	1510-Y40R
7107 Poppy	11,4	1580-R
7115 Flame	18,5	3050-Y70R
7767 Dove Grey	34,1	3502-G
7386 Savana	44,3	2005-Y50R
7731 Marbre	51,2	2002-B
7302 Sahara	35,1	3020-Y20R
7704 Sky blue	31,6	2030-B
7709 Royal blue	15,3	4040-R80B

TARASAFE GEO		
3772 Cliff	42,7	3005-Y20R
3775 Crystalline	38,9	3005-R80B
3771 Rock	31,3	3502-B
3405 Turquoise	30,9	3030-B30G
3303 Desert	44,1	3010-Y30R
3409 Ocean Wave	23,5	4030-R90B
3105 Sunspot	25,9	2050-Y70R
8081 Trail	33,0	4010-Y40R

COLORS	LRV Light Reflectance Value (Luminance)	NCS
TARASAFE ULTRA H2O		
7720 Iceberg	21,8	1002-B
7746 Stone	23,1	5502-B
7732 Gravel	9,2	7502-B
7325 Seashore	60,7	1005-Y20R
7418 Marine	31,2	3030-R90B
7413 Ocean Blue	22,9	4020-R90B
7513 Seagrass	36,0	3030-G60Y
7314 Sand	41,2	3010-Y10R

ELEGANCE SD		
0704 Raspberry Grey	20,3	5005-R80B
0341 Bilberry	34,8	2040-B10G
0329 Hazelnut	36,4	3010-Y40R
0700 Melon	48,2	1040-Y30R
0705 Patisson	64,4	1502-Y
0322 Jicama	67,8	1505-Y20R

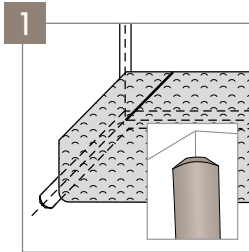
MURAL CALYPSO		
7734 Manhattan Concrete	21,8	5500-N
7728 Manhattan Stone	39,5	3502-Y
7712 Shadow	40,7	3005-Y50R
7714 Frost	43,5	3000-N
7414 Fabric Denim	46,5	2020-R90B
7753 Nordic Zen	47,8	2502-Y
7736 Fabric Wool	49,4	2502-Y
7012 Breeze	55,7	1510-B20G
7311 Linen	56,5	1505-Y40R
7408 Skyline	56,8	1515-R90B
7740 Fabric Silk	58,8	1502-Y
7004 Prism Haze Pearl	60,2	1502-G50Y
7715 Crystal	60,6	1502-R
7104 Melon	61	1030-Y20R
7010 Haze	62,3	1502-G50Y
7009 Fossil Haze	62,7	1502-G50Y
7011 Lichen	62,8	1510-G20Y
7007 Blossom Lichen	63,8	1510-G20Y
7412 Manhattan Mist	64,6	1502-Y
7006 Blossom Haze Pearl	65,0	1502-G50Y
7001 Bamboo Haze Pearl	65,8	1502-G50Y
7008 Fossil Ice	67,4	1002-Y
7744 Nordic Milk	67,5	1502-Y
7003 Prism Ice	67,7	1502-Y
7201 Moonlight	70,5	0530-Y10R
7711 Ice	70,7	1002-G
7002 Bamboo Lotus	73,3	1005-Y20R
7309 Lotus	75,5	0804-Y30R
7005 Blossom Snow Pearl	75,6	0502-Y
7000 Bamboo Snow Pearl	80,2	0502-Y
7611 Snow	82,8	0502-G50Y

Information on welding rod available on www.gerflor.com

SHOWER SYSTEM

FLOOR/WALL & ACCESSORIES SYSTEM FOR BATHROOM

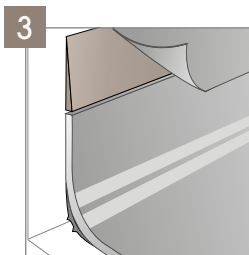
WALL ACCESSORIES



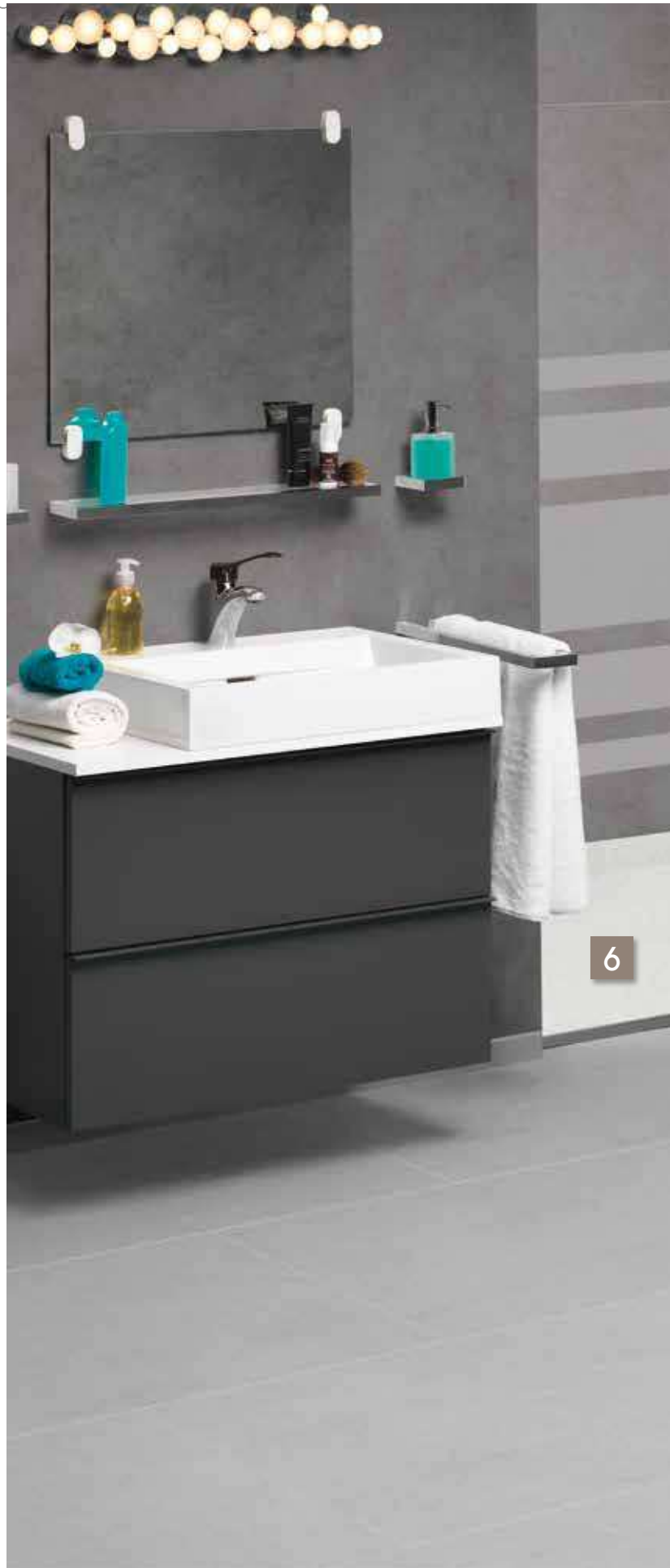
Cove former for internal wall angles CA 12 - H204



Perfect CR 41 wall weld - H231

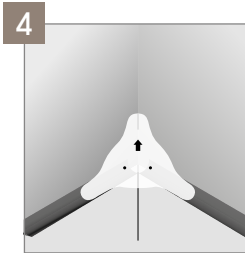


Diminishing profile - 0490

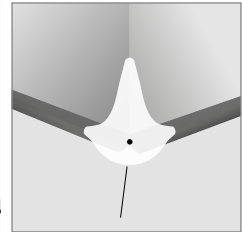




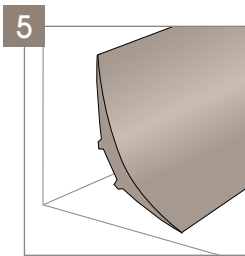
FLOORING ACCESSORIES



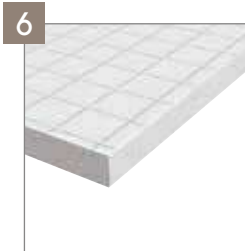
Clean Corner System IN
058S



Clean Corner System OUT
058R



Cove former
4011



Tarafoam: acoustic insulation
sublayer - 997C



PVC drain with inox grid -
H090



Drains - H112 / H113
SITAR / SITAR V



Shower threshold - 0469

The threshold has been developed in 3 colours: grey, beige and blue in order to answer to the specific requirement of Alzheimer units (no contrast).

- gris
- beige clair
- bleu

ACCESSORIES

PVC DRAINS

Description



PVC DRAIN WITH INOX GRID

H090



SITAR DRAIN

H112



SITAR V DRAIN

H113

Drains are made from white injected PVC.

They enable:

- ▶ Drainage of water
- ▶ Compatibility with the Shower System
- ▶ Complete watertightness by PVC/PVC bonding
- ▶ Fire rating NF-M1

Colours



001



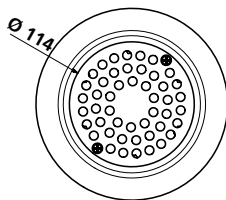
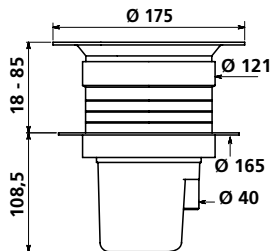
001



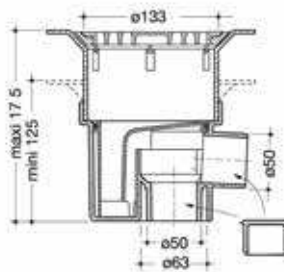
001

Benefits

- ▶ Adjustable height (up to 85 mm with extension)
- ▶ For vertical exit (or horizontal when an elbow - not supplied - is fitted)
- ▶ Flow rate: 0,6 liter per second

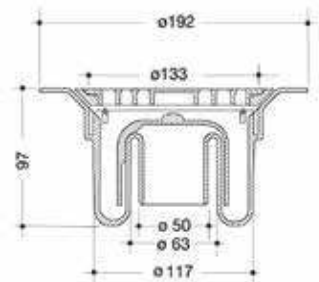


- ▶ An adjustable ring depending on the screeds
- ▶ Height adjustment
- ▶ **2 outlets (horizontal and vertical)** allow for flexibility on site
- ▶ 50 mm trap seal



Packaging Unit

- ▶ **Integral drain with vertical drainage**
- ▶ 50 mm trap seal



Packaging Unit

Tips

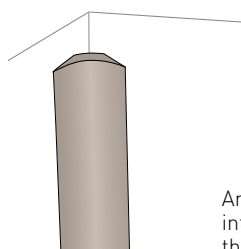
- The floor covering is filled into the gully to a watertight seal.

ACCESSORIES

COVE FORMER FOR INTERNAL ANGLES

TARAFOAM

Description



CA12

H204

Angle bead to be placed in the internal angles before installing the wall covering



COMFORT VERSION OF THE SHOWER SYSTEM

997C 6792

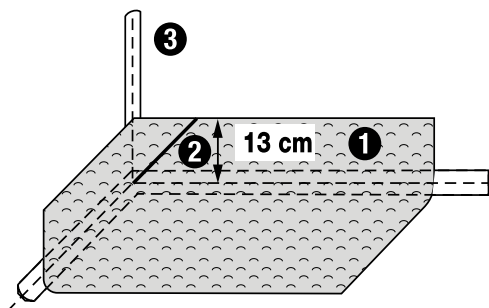
Colours



0719

Benefits

- ▶ Eliminates potential puncture damage to internal corners
- ▶ Size: 12 mm



- 1 Cove the floor up to a height of 130 mm.
- 2 Cut the floor covering at 45° and weld the CR 40 rod.
- 3 Wall angle: double bonding of the CA 12 to the entire height.

Packaging
1 x 50 lm coil

- ▶ Provides **acoustic insulation for the shower system** and comfort under foot.
- ▶ Thickness: 2mm.

Packaging
Roll of 2 m x 20 lm

Tips

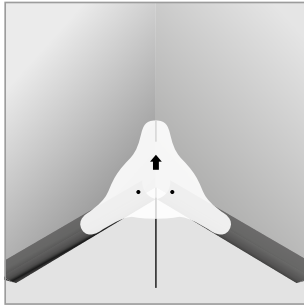
- Levels out around the edge of the room.
- Acrylic bonding.
- Edge to edge installation.

ACCESSORIES

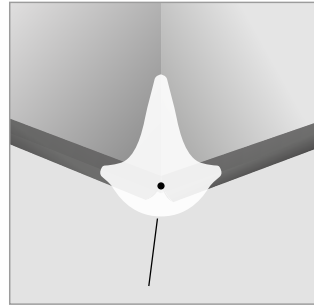
CLEAN CORNER SYSTEM IN

CLEAN CORNER SYSTEM OUT

Description



CLEAN
CORNER
SYSTEM IN



CLEAN
CORNER
SYSTEM OUT

058S

058R

Colours



0001



0001

Benefits

- ▶ **Neat and uniform design** on all corners
- ▶ **Easy and quick cleaning** and decontamination



196 x 176 mm

Packaging
60 units per box



110 x 108 mm

Packaging
20 units per box

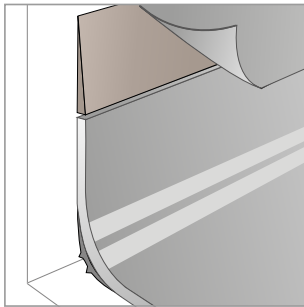
Tips

- *Installation instructions available on www.gerflor.com*

PVC WALL COVERING/COVING JUNCTION

COVE FORMER

Description

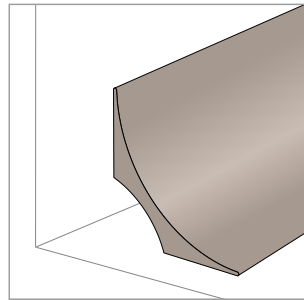


DIMINISHING PROFILE

Coving/wall covering connection

Used in laboratories, hospital shower systems, commercial kitchens

0490



PVC COVE FORMER

This accessory allows the floor-wall cove to be formed

4011

Colours



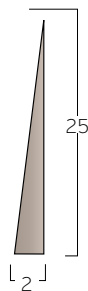
6512



6512

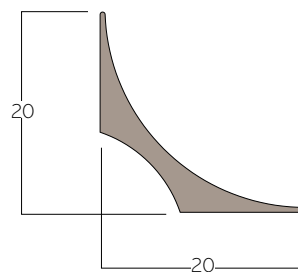
Benefits

- ▶ Makes it easier to link the floor covering and wall
- ▶ **Hygienic.** Avoids bacteria accumulation
- ▶ **Prevents** the floor covering from **tearing**, improves **durability** and ensures **watertightness**.



Packaging
2 x 25 lm rolls

- ▶ Enables coving and allows **watertightness**
- ▶ Its rounded shape **makes it easier to clean** the floor/wall junction
- ▶ Offers a better look
- ▶ Limits the risk of piercing the floor covering
- ▶ **Prevents accumulation** of bacteria.



Packaging
30 x 2 lm strips

Tips

- *Bond with acrylic adhesive*

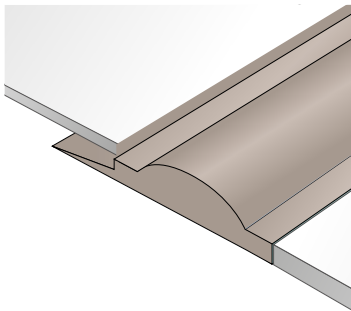
- *Only a single 45° angle is cut*
- *Double bonding (polychloropene type)*
- *Use a miter shear for a perfect cut*

ACCESSORIES

PVC SHOWER THRESHOLD PROFILE

DECOCHOC PANNEL

Description

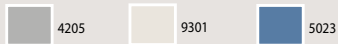


PVC SHOWER THRESHOLD PROFILE

Makes the junction between a floor covering and a shower covering

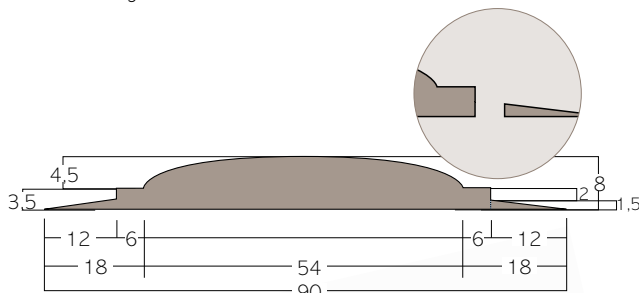
0469

Colours



Benefits

- ▶ Allows welding of 2 mm or 3.5 mm floor covering thanks to the tab system
- ▶ Weld system with the covering which ensures perfect watertightness

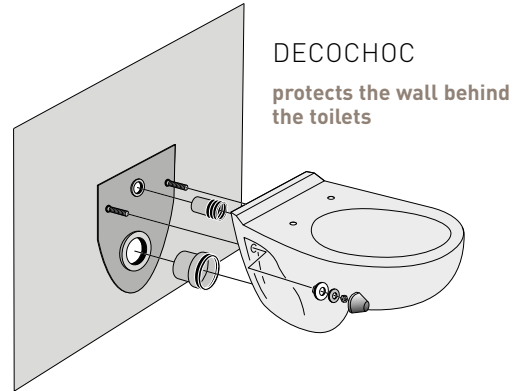


Packaging

10 x 3 lm strips

Tips

- The tab can be cut to suit a thicker floor
- Polychloroprene double bonding
- Application of sealant around the door jamb (PU or MS polymer sealant)

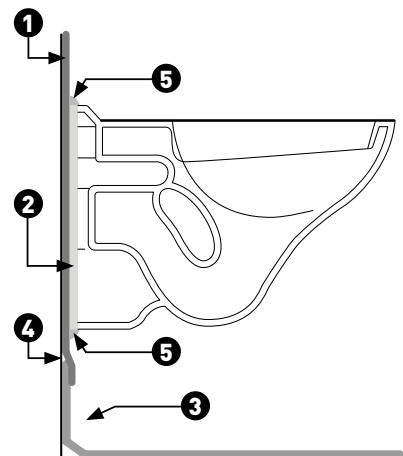


DECOCHOC

protects the wall behind the toilets

For more information, contact SPM.

- ▶ Prevents blisters on the wallcovering at the junction of the toilets



- 1 Gerflor wallcovering product
- 2 Decochoc
- 3 Flooring with 13cm cove form
- 4 Diminishing profile
- 5 Mastic

- Installation instructions available on www.gerflor.com



SPECIFIC TOOLS

LIST OF SPECIFIC TOOLS

ROMUS

e-mail : commercial@romus.fr

JANSER S.A.

LIST OF SPECIFIC TOOLS

WOLFF

www.wolff.fr

	ROMUS	JANSER	WOLFF
TRACER FOR COVING - 200 mm substrate bead	Ref. 95430	Ref. 222 430 100	
ADHESIVE SPATULA WITH INTERCHANGEABLE BLADE (18 CM)			
A 2 BLADE TKB STANDARD			
A 4 BLADE TKB STANDARD			
PRESSURE ROLLER - steel Ø 30 x 45 mm		Ref. 224 400 125	Ref. 111 200 000
COVING RULER - For cutting flooring 13 cm and 10 cm from the floor, for coving		Ref. 224 432 000	
CORK BLOCK FOR BONDING	Ref. 93145	Ref. 262 380 000	Ref. 720 930 000
COMBINED TRACER AND MARKING GAUGE - (spur 1 mm thick)	Ref. 09335	Ref. 262 130 500	
SPARE BLADE (in 5s)	Ref. 93356	Ref. 262 415 001	
SPARE POINT Ø 1,5 mm (in 20s)	Ref. 93357	Ref. 262 126 000	
ROLLER FOR INTERNAL ANGLE	Ref. 093135	Ref. 224 400 123	Ref. 116 340 000
ROLLER FOR EXTERNAL ANGLE		Ref. 262 614 000	Ref. 116 350 000
COVING FINISHING TOOL			
HOT CHAMFERING GOUGE FOR TARASFE			
ULTRA FAST NOZZLE		Ref. 224 800 007	
SPEED NOZZLE WITH BLOW HOLES	Ref. 95030	Ref. 224 700 300	
TRIANGULAR SCRAPER with interchangeable blade	Ref. 95185	Ref. 262 607 000	Ref. 721 030 000
SPARE BLADE		Ref. 262 627 001	Ref. 721 031 000
FINISHING SPATULA - For finishing flooring with projections		Ref. 262 609 100	Ref. 116 400 000 Ref. 116 402 000
PRESSURE BALL - Brass - Ø 13 mm - For rounding joints in angles		Ref. 224 816 000	Ref. 116 200 000
ROUNDED BALDE Ø 4 mm - For sharpening finishing spatulas and cleaning nozzles	Ref. 95191	Ref. 262 609 102	







ACCESSORIES AVAILABLE FROM GERFLOR (SEE PAGES 32-38)

OTHER RECOMMENDED ACCESSORIES, NOT AVAILABLE FROM GERFLOR

MASTIC - BOSTIK SA - Ref. : POLYMER MS107 de BOSTIK

MAINTENANCE

SHOWER SYSTEM FLOORINGS





	Equipment used	Cleaning products	Cleaning methods
FLOORS	First use Manual cleaning 	Alkaline detergent alcalin	<ul style="list-style-type: none"> • Damp sweeping • Manual cleaning with a scrubbing brush • Recovery of soiled water with a flat mop <ul style="list-style-type: none"> • Rinsing with clean water • Let the floor dry
	Mechanical cleaning  if soiled		
	Daily cleaning Manual cleaning 	Neutral detergent Disinfectant detergent ⁽¹⁾	<ul style="list-style-type: none"> • Damp sweeping • Manual washing with flat mop <ul style="list-style-type: none"> • Rinsing • Let the floor dry
	Mechanical cleaning 		
	Deep cleaning Manual cleaning 	Alkaline detergent	<ul style="list-style-type: none"> • Damp sweeping • Manual cleaning with a scrubbing brush • Recovery of soiled water with a flat mop <ul style="list-style-type: none"> • Rinsing with clean water • Let the floor dry
WALLS ⁽²⁾ Cleaning of walls 		Neutral detergent	<ul style="list-style-type: none"> • Wall washing • Rinsing • Let the floor dry

(1) In areas where disinfection is essential (e.g. operating theatres, hospital rooms, etc.), alternate between using neutral detergent and amine-free disinfectant detergent.

(2) For further informations, please refer below.

For safety reasons (slipperiness), hygiene and to preserve the appearance of the product, in time, take care not to leave stagnant water or wet objects (mop, broom ...) and dry well between each maintenance.

WALL COVERING MURAL CALYPSO

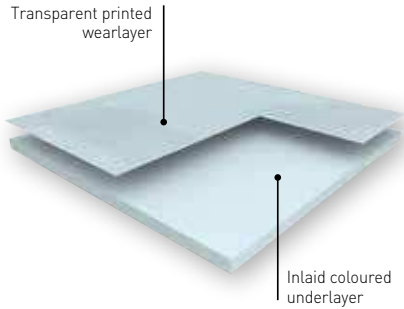
	Equipment used	Cleaning products	Cleaning methods
First use  mop		Alkaline detergent	<ul style="list-style-type: none"> • Manual cleaning with an alkaline detergent + a microfibre disposable mop • Recovery of water with a microfibre disposable mop • Rinsing with clear water
Daily cleaning Once a day  mop		Neutral detergent for areas 1 and 2 + Disinfectant detergent (amine-free) for areas 3 and 4	<ul style="list-style-type: none"> • Manual cleaning with a mop or • Steam cleaning
Periodical cleaning Once a month and at patient's departure in areas 1 and 2 Once a week and at patient's departure in areas 3 and 4  mop		Alkaline detergent or disinfectant detergent (amine-free)	<ul style="list-style-type: none"> • Cleaning with a mop + alkaline detergent <ul style="list-style-type: none"> • Rinsing with clear water • Disinfect with disinfectant detergent (amine-free) or • Steam cleaning (if manual daily maintenance)
Deep cleaning Once a month  mop		Alkaline detergent	<ul style="list-style-type: none"> • Manual cleaning with an alkaline detergent + a mop • Rinsing with clear water

These cleaning instructions have to be adapted depending on traffic and location of the area.

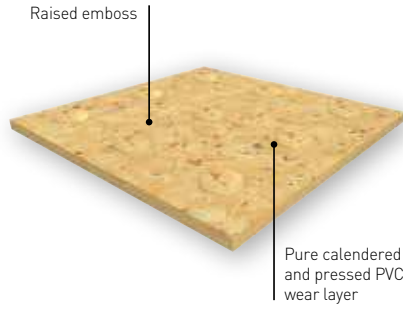
⚠ ATTENTION, FOR PVC FLOORS AND WALLS CLEANING:

Do not use disinfectant detergents used to clean ceramics, toilets and sinks for PVC coatings. Also, do not allow the rinsing water of these products to flow on shower PVC floors and walls covering because they contain certain amines causing yellowing of PVC coverings.

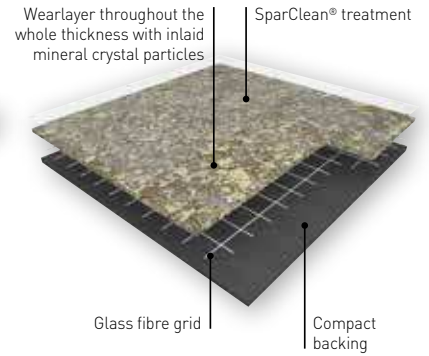
MURAL CALYPSO



ELEGANCE SD



TARASAFE ULTRA & GEO



MURAL CALYPSO

MURAL CALYPSO is a multilayered wall covering in 2m width roll and with a **B-s2,d0 fire classification** according to EN 13501.

It is hot welded with CR41 welding rods for a perfect water tightness.

It is made of a printed transparent wear layer and a **coloured** under layer for a better aspect of the welding. This layer comprises up to 30% of recycled products.

It does not contain any CMR 1 & 2 component and is 100% compliant with REACH.

It is 100% recyclable.

This wall covering is specially recommended for wet room areas and makes the installation in angles easier thanks to its flexibility.

The Shower System is compliant with most laws on "access for all" thanks to the installation in shower without tray.

ELEGANCE SD

ELEGANCE SD is a flexible homogeneous calendared compacted floorcovering available in 2 m sheet, with a non-directional polychrome design, to offer an even colour throughout the thickness. It should be hot welded with a CR 40 welding rod for a perfect watertightness.

ELEGANCE SD is specifically embossed for wet barefoot traffic.

ELEGANCE SD is compliant with antislip resistance norms (R9 according to DIN 51130 and B classification according to DIN 51097) for a **safe usage** in barefoot or shod applications such as showers. The Shower System enables access for all in showers especially for disabled people.

It is made of 32% mineral material and 34% renewable material. It uses 100% controlled recycled material. The TVOC emissions in the air at 28 days (EN 16000) are < 10 µg / m³. It is 100% recyclable.

TARASAFE ULTRA & GEO

TARASAFE ULTRA and GEO is a slip resistant vinyl floor-covering, with a PVC wear layer and deeply inlaid mineral particles and coloured chips for a decorative design and better slip resistance.

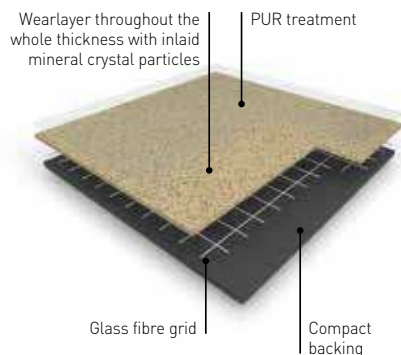
TARASAFE ULTRA and GEO is an ideal solution for traffic applications where enhanced slip resistance and durability are required. The mineral particles gives a Class B barefoot slip resistance (DIN 51 097) and R10 shod slip resistance (DIN 51 130).

It is reinforced with a glass fibre grid in sheet form. Its homogeneous wear layer provides a group T of abrasion.

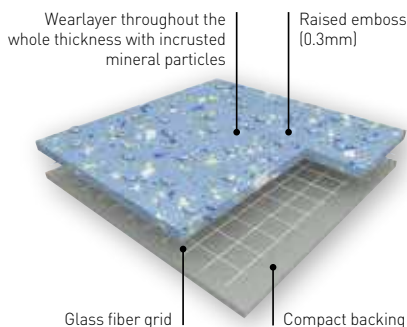
It is treated with **SparClean®** surface treatment, a low maintenance cost effective solution providing extreme resistance from soiling and staining.

It does not contain any heavy metals or CMR 1&2 and it is 100% compliant with REACH. The product emission rate of volatile organic compounds is < 100 µg/m³ (TVOC after 28 days – ISO 16000 -6). This product is 100%.

TARASAFE STANDARD



TARASAFE ULTRA H2O



TARASAFE STANDARD

TARASAFE STANDARD, with **PUR** surface treatment is a slip resistant safety vinyl floorcovering, with a PVC wear layer and deeply inlaid mineral crystal particles (patented). It is reinforced by a glass fibre grid and available in a sheet format. It is an ideal solution for **heavy traffic applications** where slip resistance, durability, hygiene and easy maintenance are required. The mineral particles gives a Class B barefoot slip resistance (DIN 51 097) and R10 shod slip resistance (DIN 51 130).

TARASAFE STANDARD, is suitable for most contract & commercial areas. It is eco-friendly, 100% recyclable, Floorscore® certified and does not contain any heavy metals or CMR 1&2, it is also 100% compliant with REACH. The product emission rate of volatile organic compounds is < 100 µg/m³ (TVOC after 28 days – ISO 16000 -6). The **PUR** surface treatment improves the product performance in term of stain resistance and durability.

TARASAFE ULTRA H2O

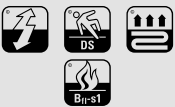
TARASAFE ULTRA H2O is a slip resistant vinyl floorcovering, with a PVC wear layer and deeply inlaid mineral particles and coloured chips for a decorative design together with a raised emboss for better slip resistance.

TARASAFE ULTRA H2O is an ideal solution for traffic applications where enhanced slip resistance with barefoot and durability are required such as wet areas. The specific embossing together with the mineral particles gives a Class C barefoot slip resistance (DIN 51 097) and R11 shod slip resistance (DIN 51 130) which makes **TARASAFE ULTRA H2O** ideal for barefoot or shod applications.









It is reinforced with a glass fibre grid in sheet form. Its homogeneous wear layer provides a group P of abrasion.

It does not contain any heavy metals or CMR 1&2 and it is 100% compliant with REACH. The product emission rate of volatile organic compounds is < 100 µg/m³ (TVOC after 28 days – ISO 16000 -6). This product is 100% recyclable and contents 18% of mineral material and 22% of inexhaustible material.

TECHNICAL DATASHEET

			MURAL CALYPSO	ELEGANCE SD	TARASAFE	
					Geo	Ultra
DESCRIPTION						
Total thickness	EN ISO 24346	mm	0.92	2.4 (on grainside)	2	
Thickness of wearlayer	EN ISO 24340	mm	0.10	2.4	1.00	0.85
Weight	EN ISO 23997	g/m ²	1610	3100	2370	2460
Width of sheet	EN ISO 24341	cm	200	200	200	
Length of sheet	EN ISO 24341	ml	30	20	20	
CLASSIFICATION						
Product specification	-	-	EN 15102	EN ISO 10581	EN ISO 10582	
European classification	EN ISO 10874	class	-	34 - 43	34 - 43	
Fire rating	EN 13 501-1	class	Bs2,d0	Bfl-s1	Bfl-s1	
Static electrical propensity	EN 1815	kV	-	< 2	< 2	
Slip resistance wet	DIN 51 097 (barefoot)	class	-	B	B	
	DIN 51 130 (ramp test with oil)		-	R9	R10	
Determination of slip resistance – wbarefoot & shod + water	EN 13845-annexe C	class	-	-	ESf - ESb	
Water tightness	EN 13553	-	-	OK	OK	
PERFORMANCES						
Wear resistance	EN 660.2	mm ³	-	≤ 4.0	≤ 2.0	
Wear group	(EN 649)	group	-	P	T	
Type Binder content	ISO 10582	type	-	-	I	
	ISO 10581		-	I	-	
Dimensional stability	EN ISO 23999	%	-	≤ 0.40	≤ 0.40	
Impact sound Insulation	EN ISO 717-2	dB	-	-	6	
TARAFOAM Impact sound Insulation	EN ISO 717-2	dB	-	-	16	
Residual indentation [requirement]	EN ISO 24343-1	mm	-	≤ 0.10	≤ 0.10	
Residual indentation (measure)	EN ISO 24343-1	mm	-	~ 0.03	~ 0.03	
Thermal conductivity	EN ISO 10456	W/(m.K)	-	0.25	0.25	
Colour fastness	EN 20 105 - B02	degree	≥ 6	≥ 6	≥ 6	
Chemical resistance	EN ISO 26987	class	OK	OK	OK	
Surface treatment	-	-	-	-	SparClean®	
Anti-bacterial activity [E. coli – S. aureus – MRSA] ⁽¹⁾	ISO 22196	-	> 99% inhibits growth	-	> 99% inhibits growth	
ENVIRONMENT / INDOOR AIR QUALITY						
TVOC after 28 days	ISO 16001	µg / m ³	-	<10	<100	
Certification	-	-	-	Floorscore®	Floorscore®	
CE MARKING						
CE	EN 15102	-	OK	-	-	
	EN 14041	-	-	-		

(1) The implementation of an effective cleaning method is the best defence against infection.

TARASAFE ULTRA H2O	
Standard	Ultra
2	2 (on grainside)
0.85	1.00
2460	2400
200	200
20	20
EN ISO 10582	EN ISO 10582
34 - 43	34 - 43
Bfl-s1	Cfl-s1
< 2	< 2
B	C
R10	R11
ESf - ESb	ESf-ESb
OK	In progress
≤ 2.0	≤ 4.0
T	P
I	I
-	-
≤ 0.40	≤ 0.40
6	-
16	17
≤ 0.10	≤ 0.10
~ 0.03	~ 0.03
0.25	0.25
≥ 6	≥ 6
OK	OK
PUR	-
> 99% inhibits growth	> 99% inhibits growth
<100	<100
Floorscore®	Floorscore®
-	
   	   





MURAL CALYPSO DESIGN
SCALE 1

GERFLOR SERVICES

PARTNER FOR ALL YOUR PROJECTS!

A TRAINING CENTER AVAILABLE FOR ALL

Dedicated to both vocational training for young people and continuing training of professionals.

A TECHNICAL ASSISTANCE

A technical team moves on your construction sites in order to support you in situ.

A KNOWN EXPERTISE

Take the advantage of our expertise and build together a global solution for your project.

A LARGE PALETTE OF ACCESSORIES



Handrails



Wall Coverings & Protections



Entrance mats



Skirtings & Profiles



ONLINE SERVICES

Access to all our services on our website



WELDING RODS MATCHING

<https://www.gerflor.com/services-pro/welding-rods.html>



VIRTUAL LIBRARY

Access to our documentation on line
<https://www.gerflor.com/services-pro/virtual-library-pro.html>

ROOM VISUALIZER "INTERIOR DESIGNER"

New Interior designer

Choose a picture or upload the picture of your own project, select a Gerflor floor and visualize in few clicks the results!

<http://interiordesignerpro.gerflor.com>



GERFLOR, AN ECO-RESPONSIBLE CHOICE



TVOC < 100µg/m³
after 28 jours



COMPOSITION

- 100% REACH compliant
- FREE of formaldehyde
- FREE of heavy metals
- FREE of solvent



INSTALLATION

- Innovative adhesive free installation systems



RECYCLED CONTENT

- 25% average recycled content
- 100% REACH compliant recycled content



RECYCLING

- 100% recyclable product



LIFE CYCLE ANALYSIS

- Eco-designed according to a product specific Life Cycle Analysis
- Product specific EPD (Environmental Products Declaration) available
- Manufactured in an ISO 14001 and ISO 50001 certified site
- Contribution to many Green Building Schemes (LEED, HQE, BREEAM...)
- Exclusive surface treatments to reduce drastically the use of chemical product and water and ensure the lowest environmental impact



INDOOR AIR QUALITY

- TVOC emissions 10 times better than norms requirements (TVOC < 100 µg/m³ after 28 days)
- TVOC < 10µg/m³ after 28 days for all products treated Evercare™ / ProtecSol²
- Floorscore certified
- M1 certified
- Comply with AgBB protocol
- No formaldehyde emission



WELLNESS

- Health: Antibacterial activity (inhibits growth > 99%)
- Safety: Anti slip performance
- Comfort: Walking comfort and impact noise reduction

OFFCUTS RECYCLING

GERFLOR SECOND LIFE PROGRAM



100%
Recyclable



RECYCLING "CLEAN" OFFCUTS:

(PRODUCTION AND INSTALLATION OFFCUTS, FLOORS WITHOUT ADHESIVE, OLD STOCK)

Gerflor has set up different programs to collect and recycle production and installation offcuts of PVC floors, and incorporate them into the production of new floors. Gerflor has created Floor to Floor, **a joint-venture with the leading recycling company Paprec**, with the target to recycle 5,000 t/year. With the Second Life program, Gerflor collects also offcuts from floors installers.



RECYCLING "GLUED" OFFCUTS:

(FLOORS WITH ADHESIVE, END-OF-LIFE FLOORS)

Together with the professional federations, Gerflor propose to installers the collection of end-of-life floors and their recycling in a specialised recycling center, where PVC is extracted and introduced into other PVC-based products such as road traffic cones, pipes for construction...

For more information, please contact your Gerflor Sales Representative or send an e-mail to our specialist: secondevie@gerflor.com



Lined writing area consisting of 17 horizontal lines for text entry.

GERFLOR INTERNATIONAL

Tel: +33 (0)4 74 05 40 00

Fax: +33 (0)4 74 05 03 13

e-mail: gerflorcontract@gerflor.com

gerflor.com

**ARCHITECTURE
DECORATION
SPORT
TECHNOSPECIFIC**

Gerflor Don't forget our complementary ranges!



Handrails



Wall Coverings
& Protections



Entrance mats



Skirtings
& Profiles

Be connected!



www.gerflor.com

#Gerflor

RC Lyon B 726 580 152 - JPE - 09/2020 - Z004 4239

SHOWER SYSTEM, AN ECO-RESPONSIBLE CHOICE



COMPOSITION
100% REACH



RECYCLABLE
100%



**INDOOR
AIR QUALITY**
100 times better than
norms requirements
(TVOC < 10ug/m³ after
28 days)



LCA
Eco-designed according
to a product specific
Cycle Analysis



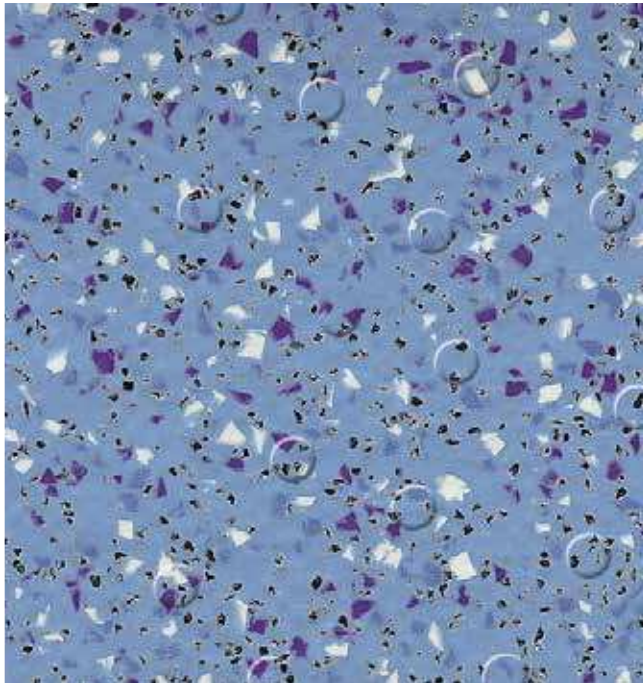
WELLNESS
Safety: Anti slip
performance

TARASAFE ULTRA H₂O

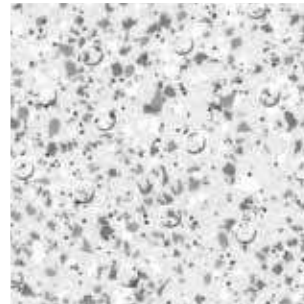


High performance slip resistant safety flooring for wet and dry, barefoot and shod applications.

Pavimento de seguridad antideslizante de altas prestaciones para aplicación en zonas secas y húmedas, para pie descalzo y calzado.

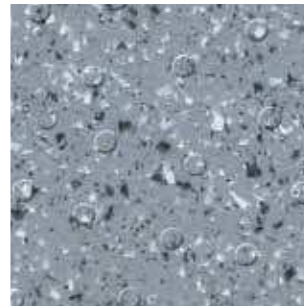


7413 Ocean Blue
NCS: 3030-R90B / LRV: 31.8

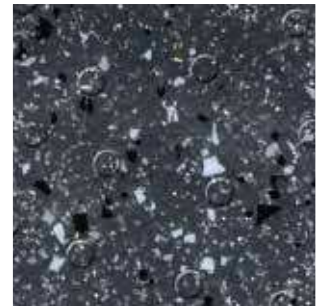


7720 Iceberg
NCS: 1002-B / LRV: 60.6

- Suitable for both barefoot and shod use
- Para pie descalzo y calzado



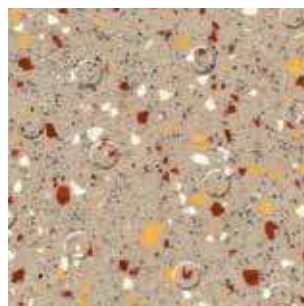
7746 Stone
NCS: 5502-B / LRV: 23.6



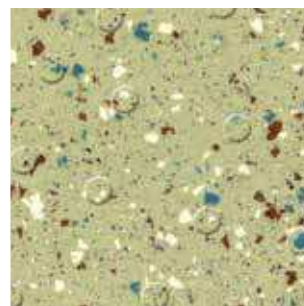
7732 Gravel
NCS: 7502-B / LRV: 9.7



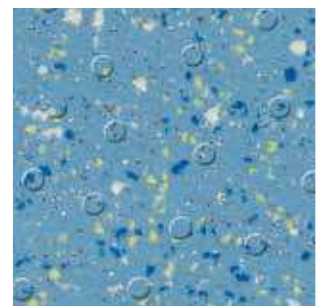
7325 Seashore
NCS: 1005-Y20R / LRV: 63.0



7314 Sand
NCS: 3010-Y10R / LRV: 41.2

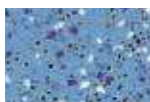


7513 Seagrass
NCS: 3030-G60Y / LRV: 36.2



7418 Marine
NCS: 4020-R90B / LRV: 22.8

THIS RANGE COMPLEMENTS THE **TARASAFE™ ULTRA COLLECTION** / ESTA GAMA COMPLEMENTA LA **COLECCIÓN TARASAFE ULTRA**



7482 Halite



8701 Opal



8709 Granite



8717 Obsidian



7383 Diopside



7384 Citrine



4505 Peridot



4465 Cobalt

ASK FOR THE TARASAFE ULTRA SAMPLE CARD!
SE PUEDE PEDIR EL CATÁLOGO TARASAFE ULTRA!

NCS: Natural Colour System
LRV: Light Reflectance Value

Gerflor
theflooringroup

TARASAFE ULTRA H₂O

gerflor.com



Tarasafe™ Ultra H₂O is an enhanced slip resistant safety vinyl floor covering with a raised emboss designed for applications where there are continuous wet areas.

Tarasafe™ Ultra H₂O es un pavimento de seguridad antideslizante de altas prestaciones con superficie en relieve diseñado para aplicaciones en aquellos lugares con superficies continuamente húmedas.



High level of wet and dry slip resistance.
Clase 3 de Resbaladidad según CTE (DB-SUA).



It provides exceptional barefoot comfort and is an ideal solution for shower and changing rooms and any high level risk wet areas where heavy duty safety flooring is required.

Ofrece un confort excepcional al pie descalzo y es una solución ideal para duchas y vestuarios, así como otras zonas con alto riesgo de deslizamiento donde además se necesita un pavimento con alta resistencia al tráfico.



A popular choice in the education, healthcare, leisure, hospitality, housing markets and any applications where slip resistance needs to be maintained.

La elección ideal en educación, salud, ocio y deporte, residencial público y privado y cualquier otra aplicación donde la resistencia al deslizamiento sea una prioridad.

Tarasafe Ultra H₂O

DESCRIPTION / DESCRIPCIÓN

Total thickness on grain side / <i>Espesor total</i>	EN ISO 24346 (EN 428)	mm	2.0
Wear layer thickness / <i>Espesor capa de uso</i>	EN ISO 24340 (EN 429)	mm	1.00
Weight / <i>Peso</i>	EN ISO 23997 (EN 430)	g/sq.m	2400
Width/Length of Sheet / <i>Ancho/Largo de rollos</i>	EN ISO 24341 (EN 426)	cm/lm	200/20

CLASSIFICATION / CLASIFICACIONES

Norm/Product Specification / <i>Normas</i>	-	-	EN ISO 10582 (EN 649)
European classification / <i>Clasificación Europea</i>	EN ISO 10874 (EN 685)	class /clase	34-43
Fire Rating / <i>Fuego</i>	EN 13501-1	class /clase	Cfl-s1
Static electrical propensity / <i>Comportamiento electrostático</i>	EN 1815	kV	<2
Slip resistance - Pendulum Test (dry & wet) / <i>Deslizamiento húmedo</i>	BS 7976-2	PTV	> 36
Surface roughness	-	µm	Rz > 20
Slip resistance wet - test with oil / <i>Deslizamiento húmedo</i>	DIN 51130	class /clase	R11
Slip resistance wet - bare foot / <i>Deslizamiento húmedo</i>	DIN 51097	class /clase	C
Slip resistance - ramp test / <i>Deslizamiento húmedo</i>	EN 13845 (annex C)	class /clase	ESb
Slip resistance wet - areas / <i>Deslizamiento húmedo</i>	CTE	class /clase	3

PERFORMANCES / CUALIDADES TÉCNICAS

Wear Resistance / <i>Abrasión</i>	EN 660.2	mm ³	≤4
Wear Group / <i>Grupo de abrasión</i>	NF 189	group	P
Type binder content / <i>Tipo carga mineral</i>	EN ISO 10582	Type / tipo	I
Dimensional stability / <i>Estabilidad dimensional</i>	EN ISO 23999 (EN 434)	%	≤ 0.40
Residual indentation: exigency / <i>Punzonamiento</i>	EN ISO 24343-1 (EN 433)	mm	≤ 0.10
Castor Chair test (type W) / <i>Determinación del efecto de una silla con ruedas (Tipo W)</i>	ISO 4918 (EN 425)	-	OK
Thermal Conductivity / <i>Conductividad térmica</i>	EN ISO 10456 (EN 12524)	W/(m.K)	0.25
Colour Fastness / <i>Resistencia a la luz</i>	EN 20 105-B02	degree / grado	≥6
Chemical Products Resistance / <i>Resistencia a los productos químicos</i>	EN ISO 26987 (EN 423)	-	OK
Anti-bacterial activity (MRSA) / <i>Actividad antibacteriana (MRSA)⁽¹⁾</i>	ISO 22196	-	> 99% inhibits growth / <i>inhibe el crecimiento</i>

ENVIRONMENT/INDOOR AIR QUALITY / MEDIO AMBIENTE/CALIDAD AIRE INTERIOR

TVOC after 28 days / <i>TVOC (28 días)</i>	ISO 16000-6	µg/m ³	<100
Certification / <i>Certificado</i>	-	-	Floorscore®

CE MARKING / MARCA DE CONFORMIDAD CE

CE	EN 14 041	-	
----	-----------	---	--

(1) The implementation of an effective cleaning regime is the most important defence against infection.
La implementación de un efectivo régimen de limpieza es la defensa más importante contra la infección.



Installation and Maintenance Guidelines, Complementary ranges available on our Gerflor website.

IMPORTANT: The information contained in this document is valid from 01/04/2018 and is subject to change at any time without notice. In the context of constantly changing technology, our customers are responsible, prior to any use, for checking with us that this document is the version in force.

Rubber leaves indelible stains on vinyl floorings: do not use mats with rubber backing and replace tubular furniture feet with those made of PVC or polyamide. Place mats of sufficient length at entrances to reduce outside sources of dirt.

TARASAFE ULTRA H₂O. LESS SPEAKING FOR MORE ACTIONS

<p>COMPOSITION 100% REACH</p>	<p>INDOOR AIR QUALITY 10 times lower than norms requirements (TVOC <100µg/m³ after 28 days)</p>	<p>RECYCLABILITY 100%</p>	<p>LCA Eco-designed according to a product specific life cycle analysis</p>	<p>WELLNESS Anti slip R10</p>
--	--	--------------------------------------	--	--

Gerflor
theflooringgroup