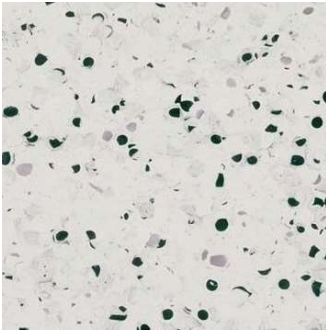


CATÁLOGO

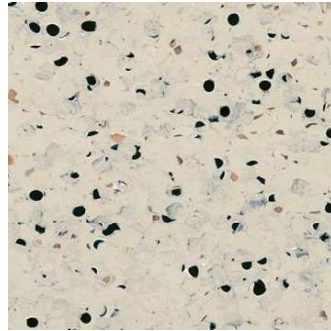
Productos Especializados PVC



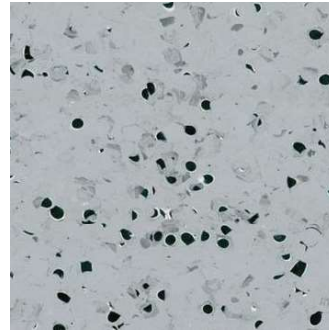
MIPOLAM EL 5



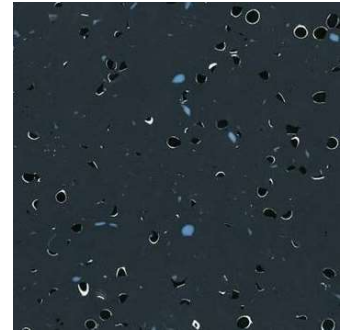
0350 Light Grey



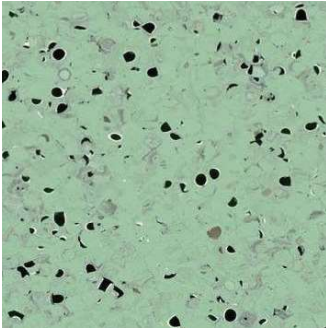
0353 Beige



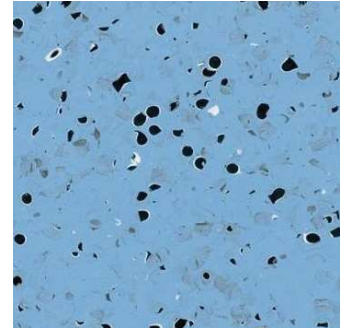
0352 Grey



0351 Black

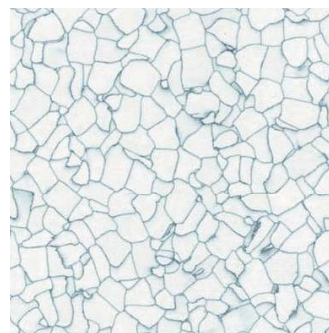
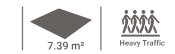


0355 Green

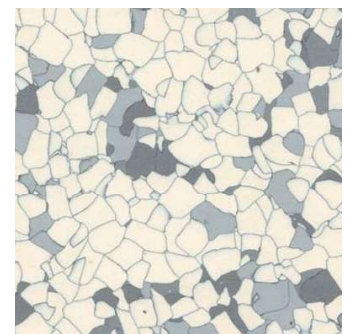


0354 Blue

MIPOLAM TECHNIC EL 5



0635 White



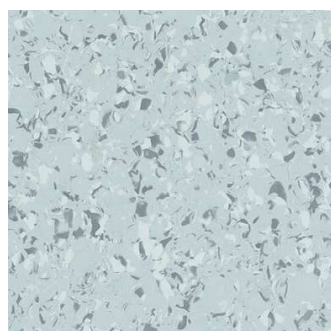
0637 Light Blue

0636 Grey

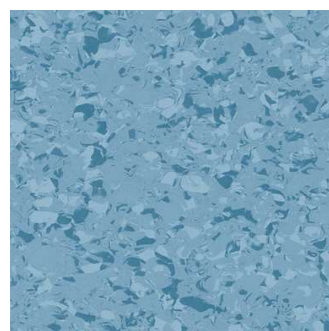
MIPOLAM EL 7



4401 Quartz



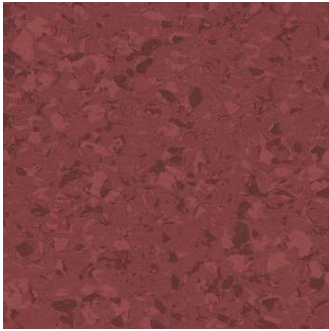
4410 Violet Grey



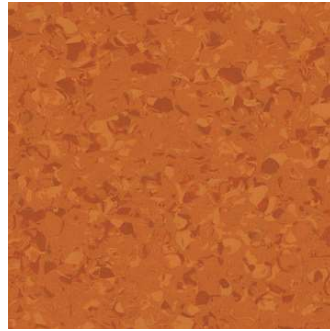
4416 Sapphire



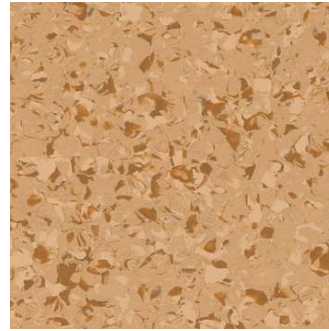
MIPOLAM AFFINITY



4448 Ruby



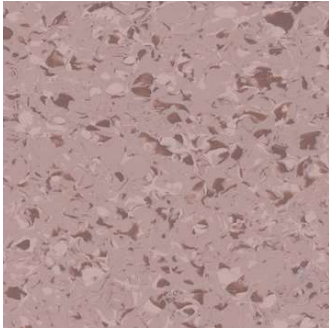
4455 Orange Sunlight



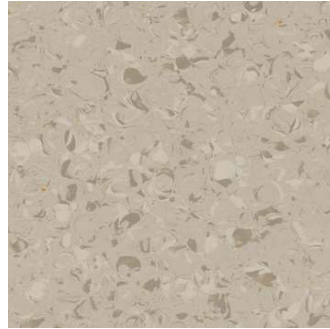
4425 Amber



4432 Citrine



4437 Cashmere Rose



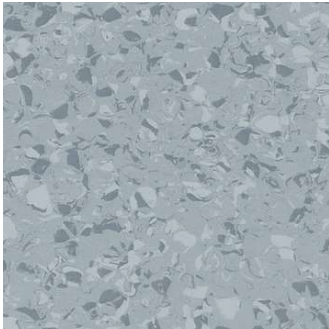
4441 Light Greige



4424 Smoked Opal



4401 Quartz



4420 Silver Grey



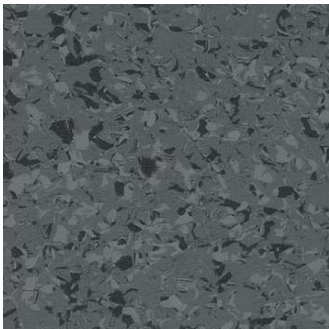
4408 Crystal Ice



4447 Light Emerald



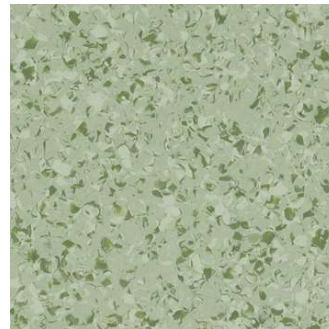
4496 Light Sapphire



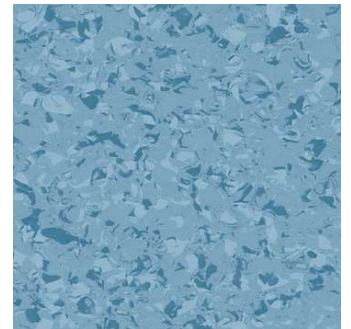
4459 Grey Storm



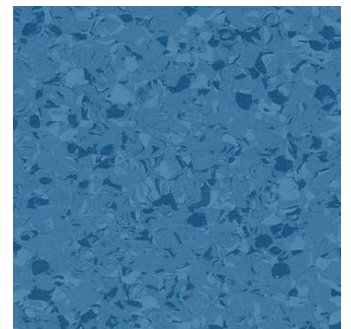
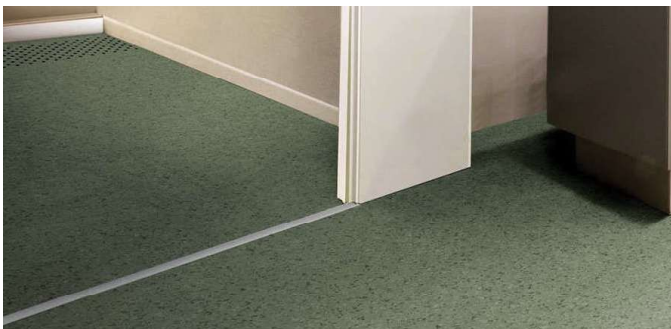
4409 Matte Grey



4407 Spearmint



4416 Sapphire



4446 Blue Ocean





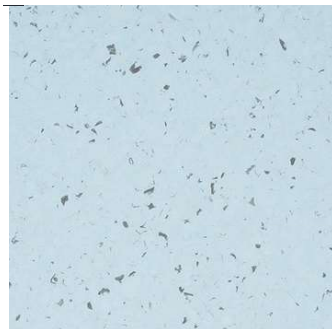
MIPOLAM PLANET



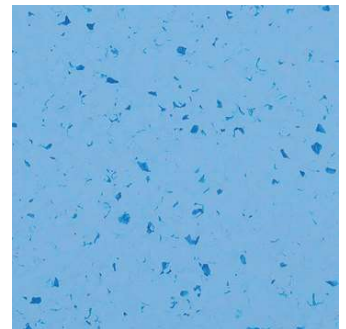
5408 Chalk Dust



5413 Rain Fall



5406 Moqui



5426 Shadow



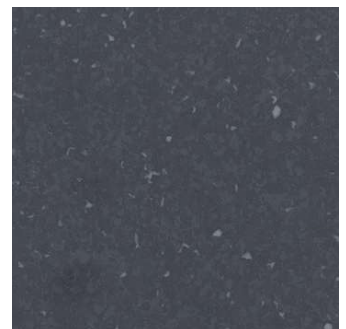
5403 Moon Dust



5424 Hawk Eye



5420 Stone Powder



5460 Lava Stone

MURAL CLUB



0001 White



0006 Grey



0003 Sand



0007 Blue



0004 Green



0005 Yellow

MIPOLAM TROPLAN



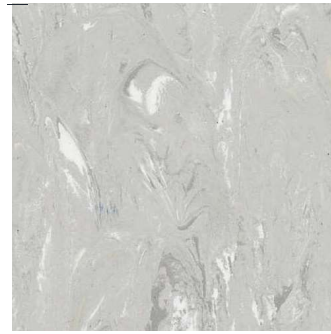
Evercare™



1002 Beige



1009 Light Grey



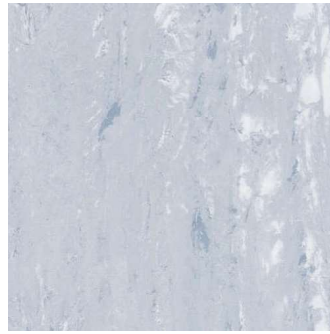
1010 Grey



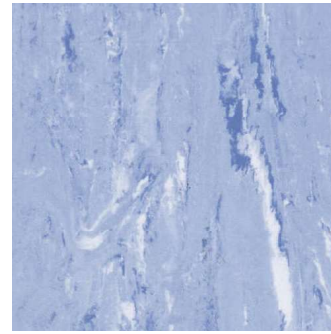
1060 Anthracite



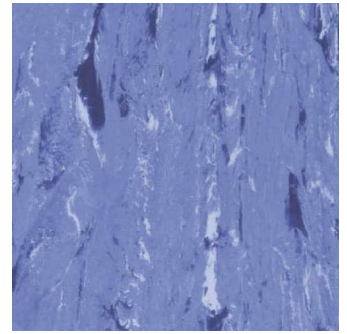
1007 Green



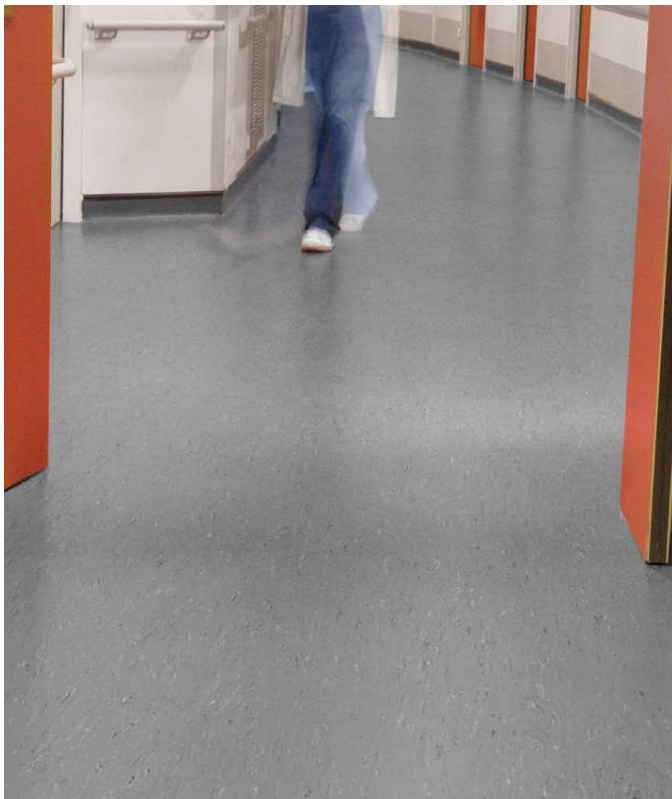
1006 Blue



1036 Medium Blue



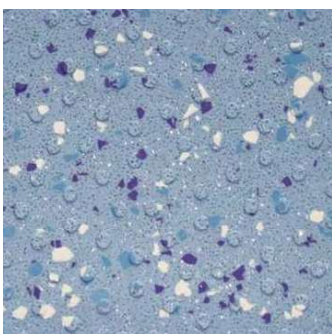
1056 Dark Blue



TARASAFE H₂O



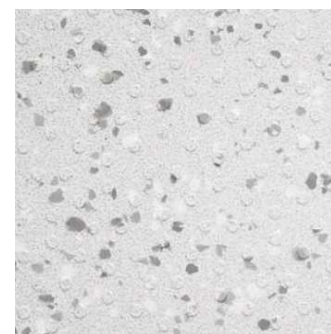
Evercare™



7413 Ocean Blue



7325 Seashore



7720 Iceberg



INFORMACIÓN TÉCNICA

	MURALES			CONTROL ESD			HOMOGENEOS BACTERIOSTATICOS			SEGURIDAD
	MURAL CLUB	MIPOLAM EL5	MIPOLAM TECHNIC EL5	MIPOLAM EL7	MIPOLAM PLANET	MIPOLAM AFFINITY	MIPOLAM TROPLAN	TARASAFE ULTRA H ₂ O		
DESCRIPCION										
Espesor total	EN ISO 24346	mm	1	2	2	2	2	2	2	2
Peso	EN ISO 23997	g/m ²	1785	3060	3440	3100	2700	2850	3300	2400
Ancho de rollos	EN ISO 24241	cm	200	200	-	200	200	200	200	200
Largo de rollos	EN ISO 24341	ml	30	20	-	20	20	20	20	20
Tamaño de loseta	EN ISO 24342	ml	-	-	608*608	-	-	-	-	-
Cantidad losetas/caja	-	-	-	-	20	-	-	-	-	-
CLASIFICACIONES										
Normas	-	-	EN 15 102	EN ISO 10581	EN ISO 10581	EN 10581	EN ISO 10581	EN ISO 10581	EN ISO 10581	EN 10582
Europea	EN ISO 10874	Clase	-	34-43	34-43	34-43	34-43	34-43	34-43	34-43
Conductividad	EN 1081	Ohm	-	10 ⁴ < Rt < 10 ⁶	5x10 ⁴ < Rt < 10 ⁶	5x10 ⁶ < Rt < 10 ⁸	-	-	-	-
Fuego	EN 13 501-1	Clase	B-s2,d0	B _{fl} -s1	B _{fl} -s1	B _{fl} -s1	B _{fl} -s1	B _{fl} -s1	B _{fl} -s1	C _{fl} -s1
Comportamiento electroestático	EN 1815	kV	-	<2	<2	<2	<2	<2	<2	<2
Deslizamiento húmedo	DIN 51130	Clase	-	R9	R9	R9	R9	R9	R9	R11
Deslizamiento húmedo (pie descalzo)	DIN 51097	Clase	-	-	-	-	-	-	-	C
Deslizamiento húmedo (Áreas húmedas)	CTE	Clase	-	-	-	-	-	-	-	3
CUALIDADES TÉCNICAS										
Contenido de binder	ISO 10581	Tipo	-	I	II	II	I	I	I	II
Estabilidad dimensional	EN ISO 23999	%	-	≤.4	≤.25	≤.4	≤.4	≤.4	≤.4	≤.4
Aislamiento acustico	EN ISO 717-2	dB	-	-	-	-	5	5	4	-
Resistencia a la luz	EN 20 105-B02	Grado	≥6	≥6	≥6	≥6	≥7	≥6	≥6	≥6
Punzonamiento	-	mm	-	~0.02	~0.03	~0.02	~0.02	~0.02	~0.02	~0.02
Determinación de efecto de silla de ruedas	ISO 4918	-	-	-	-	-	OK	OK	OK	OK
Resistencia térmica	EN ISO 10456	W/(m.K)	-	0.25	0.25	0.25	0.25	0.25	0.25	0.25
Resistencia a los productos químicos	EN ISO 26987	Clase	-	OK	OK	OK	OK	OK	OK	OK
Actividad anti-bacterial (E.coli - S. aureus - MRSA))	ISO 22196	-	>99% Inhibe el crecimiento							
Actividad anti-bacterial (human coronavirus 229E)	ISO 21702	-	99.7% despues 2H							
Tratamiento de superficie	-	-	PUR	EVERCARE	-	EVERCARE	EVERCARE	EVERCARE	EVERCARE	EVERCARE
TVOC	ISO 16000-6	µg/m ³	-	<10	<10	<10	<10	<10	<10	<10
Certificación	-	-	-	Floorscore	Floorscore	Floorscore	Floorscore	Floorscore	Floorscore	Floorscore

